

SC-5, 10 JUL 2025 to 07 AUG 2025

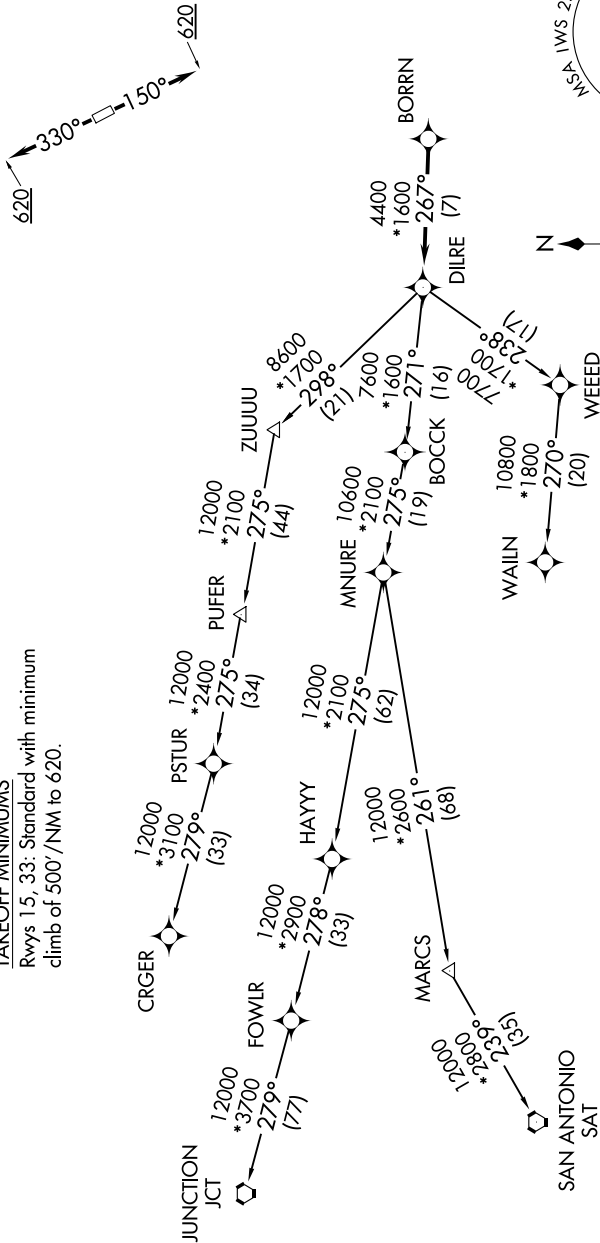
CTAF
123.05
CINC DEL
121.15
HOUSTON DEP CON
123.8 257.7

RNAV 1 - DME/DME/IRU or GPS.

RADAR required.

TOP ALTITUDE:
ASSIGNED BY ATC

TAKEOFF MINIMUMS
Rwys 15, 33: Standard with minimum
climb of 500'/NM to 620.



NOTE: CRGR-TRANSITION ATC assigned only
for aircraft departing 54T, AXH, EFD, GLS,
HPY, IWS, LBX, LVJ, SGR, TME, T00, T41.

(CONTINUED ON FOLLOWING PAGE)

SC-5, 10 JUL 2025 to 07 AUG 2025