

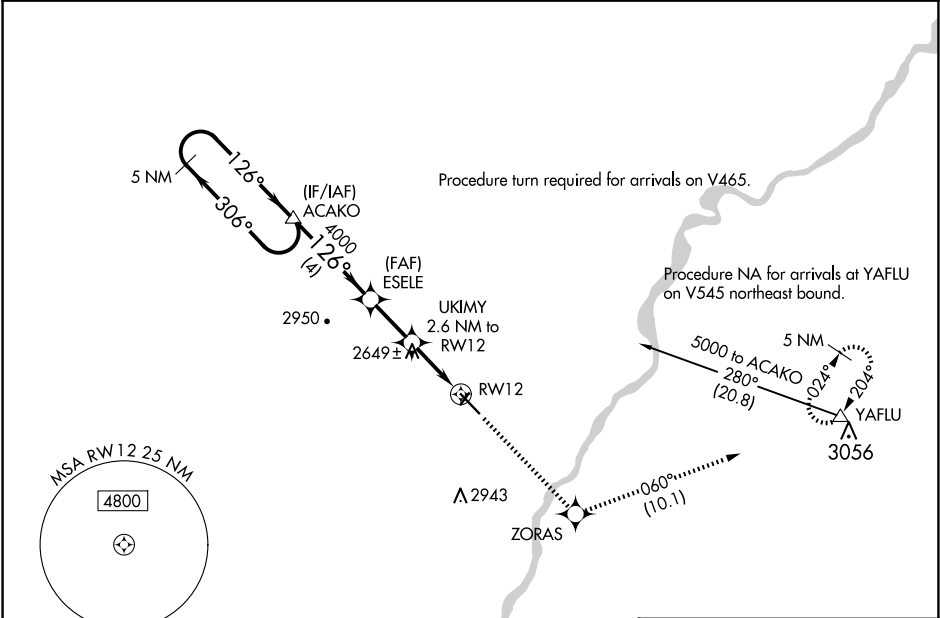
WAAS CH 40423 W12A	APP CRS 126°	Rwy Idg TDZE Apt Elev	5704 2458 2458
--	------------------------	-----------------------------	---

RNAV (GPS) RWY 12

DAWSON COMMUNITY (GDV)

<div>RNP APCH.</div> <div> <div> MISSED APPROACH: Climb to 6000 direct ZORAS and on track 060° to YAFLU and hold, continue climb-in-hold to 6000. </div> </div>	<div> <div> For uncompensated Baro-VNAV systems, LNAV/VNAV NA below -19°C or above 28°C. When local altimeter setting not received, procedure NA. Rwy 12 helicopter visibility reduction below ¾ SM NA. </div> </div>
---	---

AWOS-3PT 135.075	SALT LAKE CENTER 126.85 305.2	UNICOM 122.8 (CTAF) 1
----------------------------	---	---------------------------------



VGSI and RNAV glidepath not coincident (VGSI Angle 3.00/TCH 37).				ELEV 2458	D	TDZE 2458
5 NM Holding Pattern	ACAKO	6000 ↑	ZORAS ✱	tr 060° △	YAFLU	
5000 ← 306° 126° →		ESELE 4000	UKIMY 2.6 NM to RW12	*LNAV only		
GP 3.00° TCH 52		4000	*3320	RW12		
4 NM		2.1 NM		2.6 NM		
CATEGORY	A	B	C	D		
LPV DA	2708-1 250 (300-1)					
LNAV/VNAV DA	2708-1 250 (300-1)					
LNAV MDA	2900-1 442 (500-1)		2900-1 3/8 442 (500-1 3/8)			
CIRCLING	2900-1 442 (500-1)	2920-1 462 (500-1)	3280-2 1/2 822 (900-2 1/2)	3280-2 3/4 822 (900-2 3/4)		