

LIVERMORE, CALIFORNIA

AL-6075 (FAA)

23054

WAAS CH 50214 W25A	APP CRS 255°	Rwy Idg 5253 TDZE 400 Apt Elev 400
--	------------------------	---

RNAV (GPS) RWY 25R
LIVERMORE MUNI (LVK)

T Circling to Rwy 25L NA at night. For uncompensated Baro-VNAV systems, **A** LNAV/VNAV NA below -5°C (23°F) or above 54°C (130°F). Circling NA north of Rwy 7L-25R. RADAR Required. DME/DME RNP-0.3 NA. For inop ALS, increase LNAV Cat C/D to 1 1/2 SM.

MALSR



MISSED APPROACH: Climb to 4000
direct DRNAY and on track 317°
to WHYEE.

ATIS 119.65	NORCAL APP CON 123.85 278.3	LIVERMORE TOWER ★ 118.1 (CTAF) 0 239.25	GND CON 121.6	UNICOM 122.95
-----------------------	---------------------------------------	---	-------------------------	-------------------------

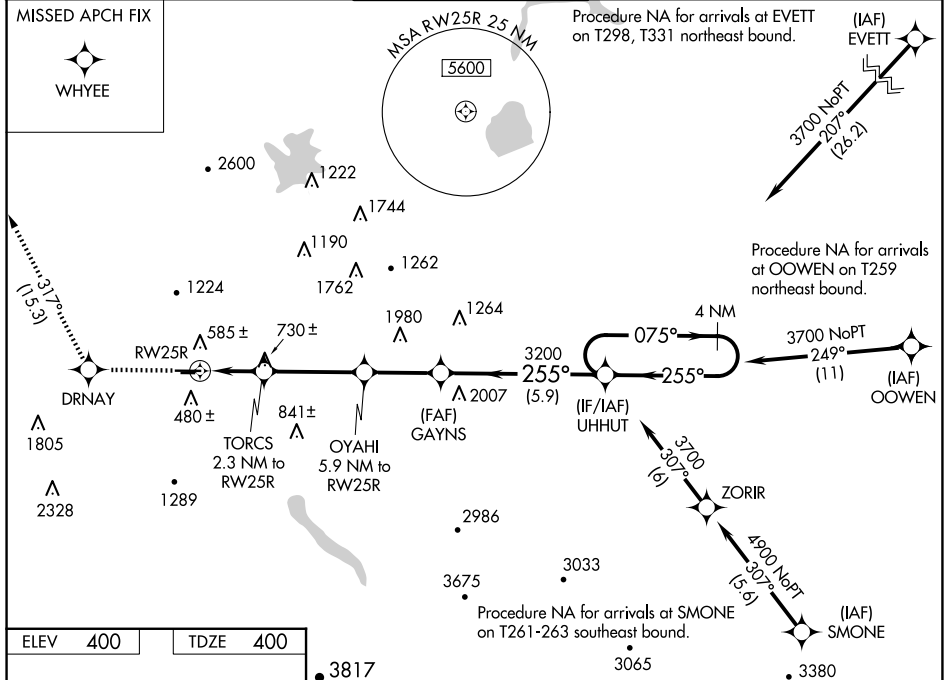
MISSED APCH FIX



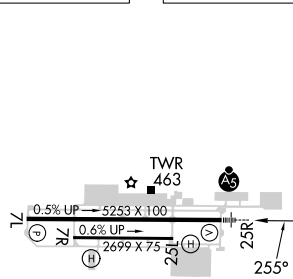
WHYEE

Procedure NA for arrivals at EVETT
on T298, T331 northeast bound.

(IAF)



ELEV	400		TDZE	400
------	-----	--	------	-----



<div style="display: flex; justify-content: space-between;"> • 3817 3065 • 3380 </div> <div style="display: flex; align-items: center; margin-top: 10px;"> <div style="border: 1px solid black; padding: 5px; margin-right: 10px;"> 4000 ↑ DRNAY </div> <div style="margin-right: 10px;">tr 317°</div> <div style="border: 1px solid black; padding: 5px;"> WHYEE </div> </div> <p>*RNAV only</p> <p>TORCS 2.3 NM to RW25R OYAH 5.9 NM to RW25R GAYNS 3200 UHHUT 4 NM Holding Pattern 075° → ← 255° 3700 GP 3.00° TCH 47</p> <p>RW25R 1.7 NM to RW25R RW25R 0.6 NM 1.7 NM 3.6 NM 2.7 NM 5.9 NM</p> <p>1180* 2320* 3200</p>					
CATEGORY	A	B	C	D	
LPV DA	600-½ 200 (200-½)				
RNAV/VNAV DA	843-⅞ 443 (500-⅞)				
RNAV MDA	980-½ 580 (600-½)	980-1¼ 580 (600-1¼)			
C CIRCLING	980-1 580 (600-1)	1140-2 740 (800-2)	1780-3 1380 (1400-3)		

MIRL Rwy 7R-25L
HIRL Rwy 7L-25R **L**

LIVERMORE, CALIFORNIA

Amdt 2 07DEC17

37°42'N-121°49'W

LIVERMORE MUNI (LVK)

RNAV (GPS) RWY 25R

SW-2, 10 JUL 2025 to 07 AUG 2025