

WAAS CH 50321 W06A	APP CRS 063°	Rwy Idg TDZE 1446 Apt Elev 1448
--	------------------------	---

RNAV (GPS) RWY 6

HABERSHAM COUNTY(AJR)

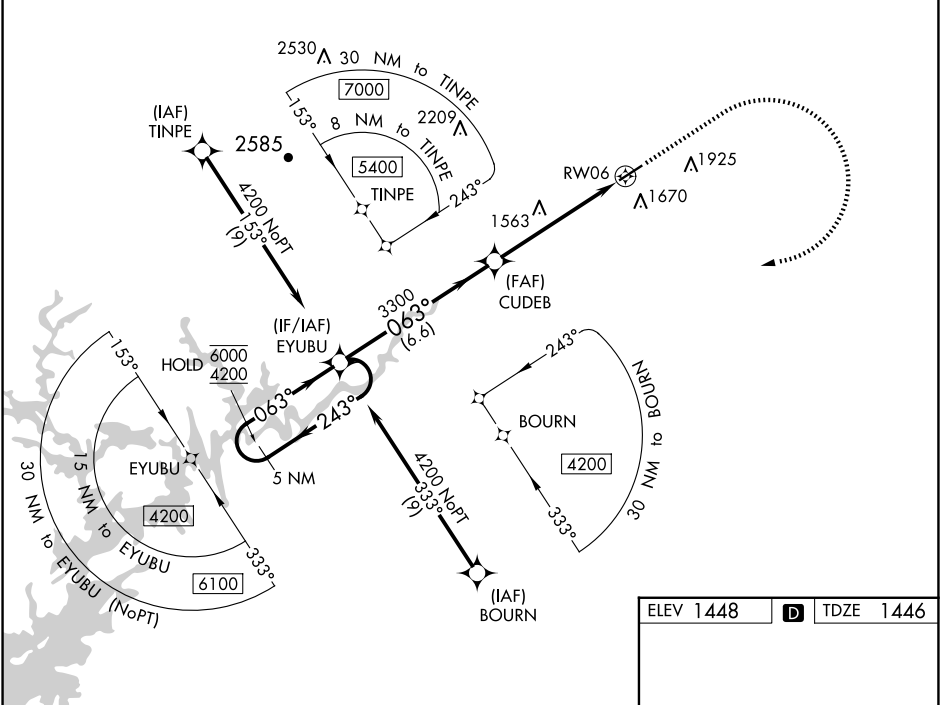
RNP APCH - GPS.

⚠

Circling Rwy 24 NA at night. Rwy 6 helicopter visibility reduction below ¾ SM NA. For uncompensated Baro-VNAV systems, LNAV/VNAV NA below -17°C or above 54°C.

MISSED APPROACH: Climb to 2000 then climbing right turn to 4200 direct EYUBU and hold.

AWOS-3 119.175	ATLANTA CENTER 134.8 379.95	UNICOM 122.7 (CTAF) 0
--------------------------	---------------------------------------	---------------------------------



5 NM Holding Pattern				
VGSI and RNAV glidepath not coincident (VGSI Angle 3.25/TCH 45).				
EYUBU				
CUDEB				
RWY 6				
GP 3.10° TCH 55				
6.6 NM 4.1 NM 1.5 NM				
CATEGORY	A	B	C	D
LPV DA	1710-7/8		264 (300-7/8)	
LNAV/VNAV DA	1824-1		378 (400-1)	
LNAV MDA	1980-1	534 (600-1)	1980-1½	534 (600-1½)
CIRCLING	2100-1	2280-1¼	2280-2½	2280-2¾
	652 (700-1)	832 (900-1¼)	832 (900-2½)	832 (900-2¾)

ELEV 1448 D TDZE 1446

MIRL Rwy 6-24 0