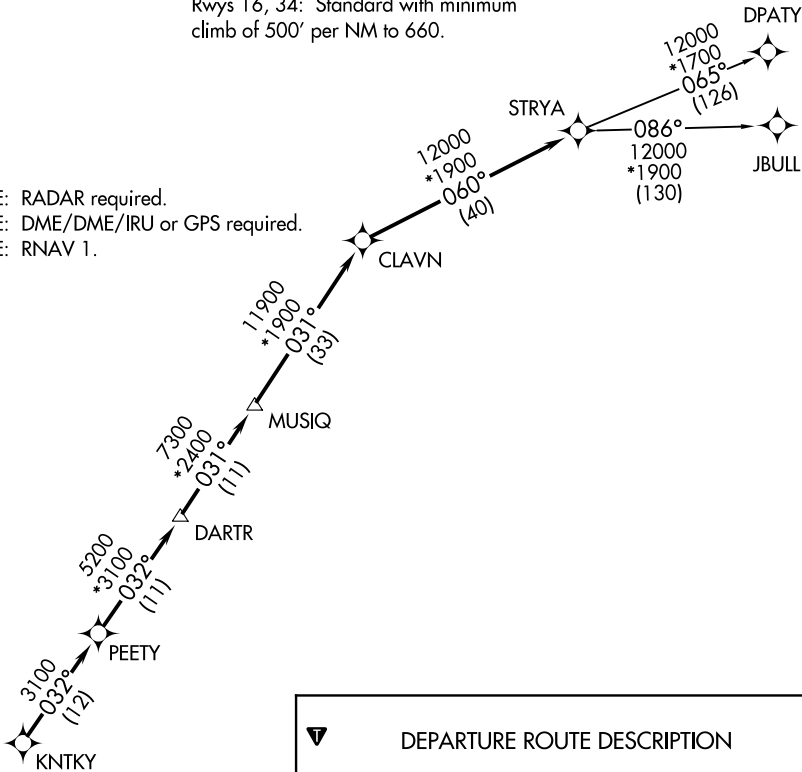


AWOS-3  
119.325  
CTAF  
123.0  
HOUSTON DEP CON  
119.7 281.4

TOP ALTITUDE: ASSIGNED BY ATC

TAKEOFF MINIMUMS  
Rwys 16, 34: Standard with minimum  
climb of 500' per NM to 660.

NOTE: RADAR required.  
NOTE: DME/DME/IRU or GPS required.  
NOTE: RNAV 1.



DEPARTURE ROUTE DESCRIPTION

TAKEOFF RUNWAY 16: Climb on heading 157° to 1400 for RADAR vectors to KNTKY, thence. . . .  
TAKEOFF RUNWAY 34: Climb on heading 312° to 2000 for RADAR vectors to KNTKY, thence. . . .  
. . . .on track 032° to PEETY, then on track 032° to DARTR, then on track 031° to MUSIQ, then on track 031° to CLAVN, then on track 060° to STRYA, then on (transition). Maintain ATC assigned altitude.  
Expect filed altitude 10 minutes after departure.

DPATY TRANSITION (STRYA8.DPATY)  
JBULL TRANSITION (STRYA8.JBULL)

NOTE: Chart not to scale.

SC-5, 10 JUL 2025 to 07 AUG 2025

SC-5, 10 JUL 2025 to 07 AUG 2025