

AWOS-3  
119.325  
CTAF  
123.0  
HOUSTON DEP CON  
119.7 281.4

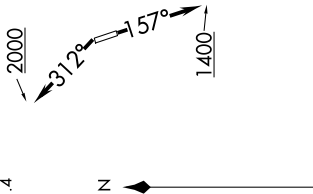
(HOODO7.HOODO) 21280  
HOODO SEVEN DEPARTURE (RNAV)

AL-6073 (FAA)

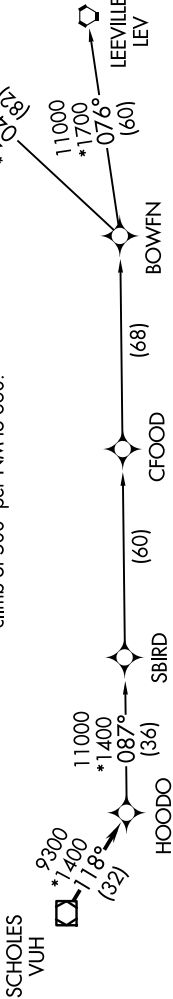
CLEVELAND MUNI (6R3)  
CLEVELAND, TEXAS

TOP ALTITUDE:  
ASSIGNED BY ATC

- NOTE: RNAV 1.
- NOTE: RADAR required.
- NOTE: ATC assigned only.
- NOTE: DME/DME/IRU or GPS required.
- NOTE: For non-GPS equipped aircraft, LCH, LLA, TBD, and LEV DME's must be operational.



TAKEOFF MINIMUMS  
Rwys 16, 34: Standard with minimum  
climb of 500' per NM to 660.



NOTE: Chart not to scale.

DEPARTURE ROUTE DESCRIPTION

- TAKEOFF RUNWAY 16: Climb on heading 157° to 1400, for RADAR vectors to VUH VOR/DME, thence . . .
- TAKEOFF RUNWAY 34: Climb on heading 312° to 2000, for RADAR vectors to VUH VOR/DME, thence . . .

. . . on track 118° to HOODO, then on (transition). Maintain ATC assigned altitude.  
Expect filed altitude 10 minutes after departure.

- BOWFN TRANSITION (HOODO7.BOWFN)
- CFOD TRANSITION (HOODO7.CFOD)
- HARVEY TRANSITION (HOODO7.HRV)
- LEEVILLE TRANSITION (HOODO7.LEV)
- SBIRD TRANSITION (HOODO7.SBIRD)