

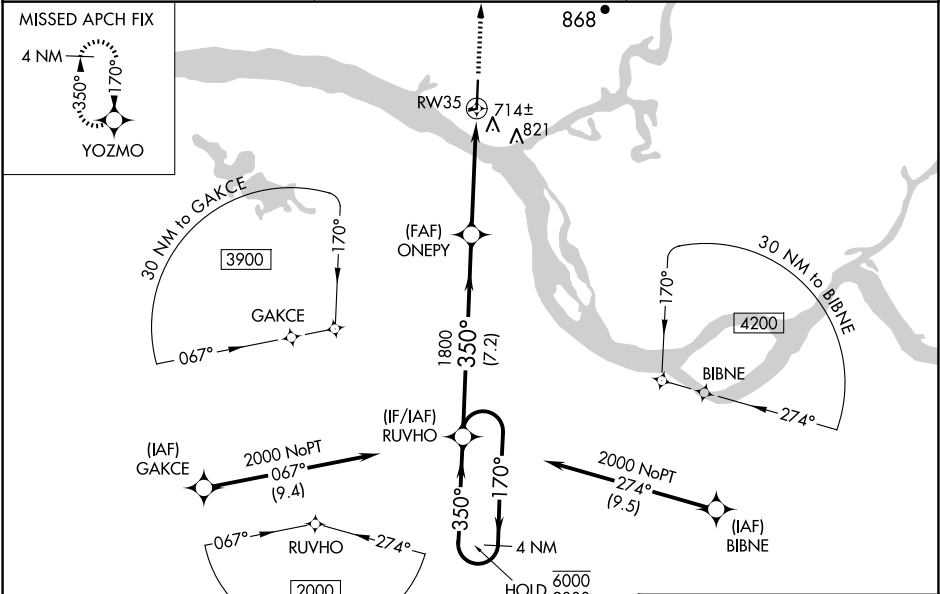
WAAS CH 87028 W35A	APP CRS 350°	Rwy Idg TDZE Apt Elev	6008 308 312
--	------------------------	-----------------------------	---

RNAV (GPS) RWY 35

ST MARY'S (KSM)(PASM)

RNP APCH - GPS.	<p>⚠ Circling NA east of Rwy 17-35. Rwy 35 helicopter visibility reduction below 1 SM NA. Baro-VNAV NA when using Mountain Village altimeter setting. For uncompensated Baro-VNAV systems, LNAV/VNAV NA below -19°C or above 54°C. When local altimeter setting not received, use Mountain Village altimeter setting and increase all DA 29 feet and all MDAs 40 feet and LNAV visibility Cat C/D ½ SM and Circling visibility Cat C ½ SM, Cat D ¼ SM.</p>	MISSED APPROACH: Climb to 2600 direct YOZMO and hold.
-----------------	---	--

AWOS-3P 128.7	ANCHORAGE CENTER 124.0	CTAF 122.3
-------------------------	----------------------------------	----------------------



4 NM Holding Pattern		RUVHO	ONEPY	RW35	2600	YOZMO
6000		170°	350°	1800		
2000		350°	1800			
GP 3.00°						
TCH 50						
		7.2 NM	4.5 NM			
CATEGORY	A	B	C	D		
LPV DA	508-1		200 (200-1)			
LNAV/VNAV DA	884-2		576 (600-2)			
LNAV MDA	960-1 652 (700-1)		960-1 652 (700-1)			
CIRCLING	960-1 648 (700-1)		960-1 648 (700-1)	960-2 648 (700-2)		

ELEV 312

TDZE 308

4 NM Holding Pattern

1800

350°

170°

7.2 NM

4.5 NM

2600

YOZMO

REIL Rwy 17 and 35

HIRL Rwy 17-35

MIRL Rwy 6-24