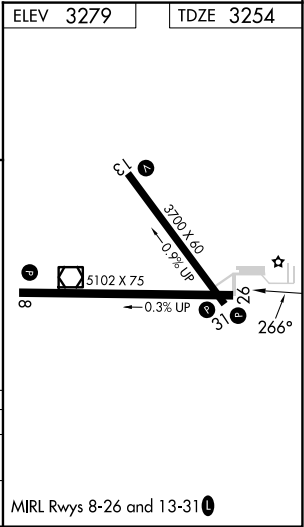
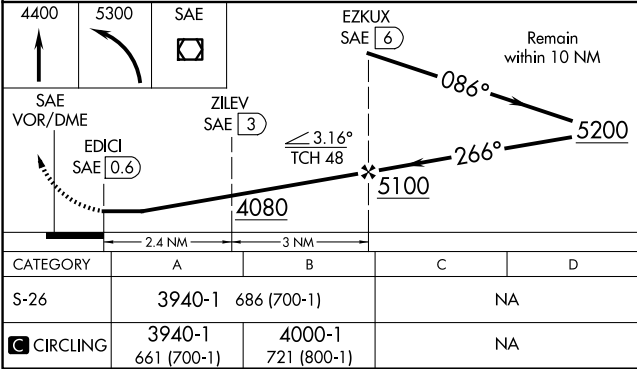
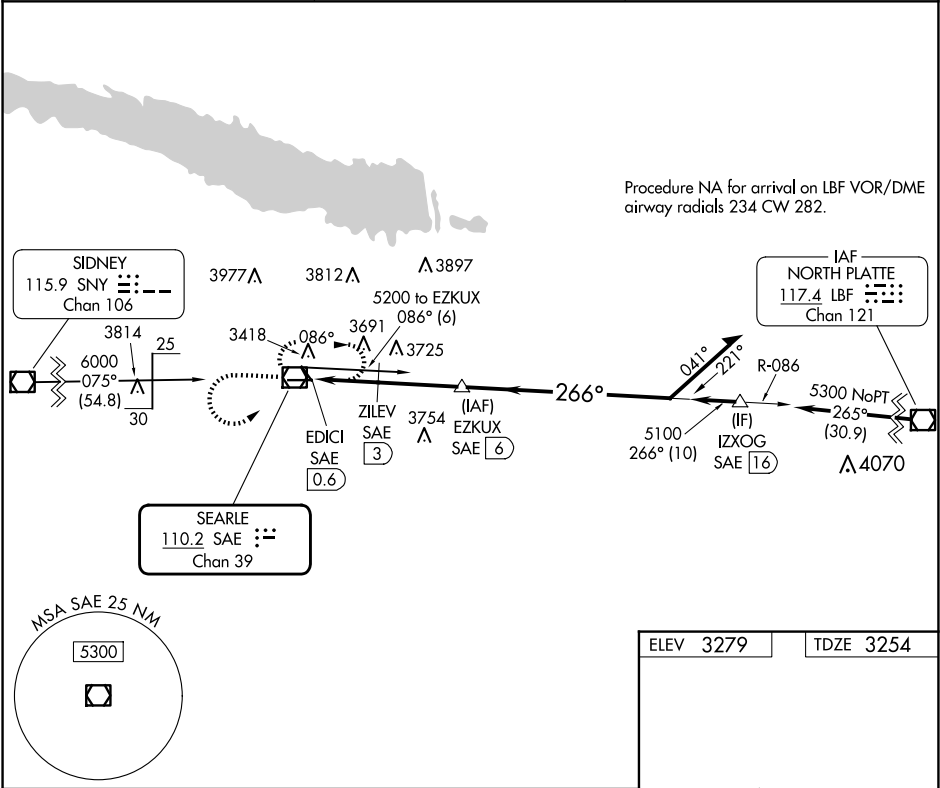


VOR/DME SAE	APP CRS	Rwy Idg	5102
110.2	266°	TDZE	3254
Chan 39		Apt Elev	3279

VOR RWY 26
SEARLE FLD (OGA)

DME required.	MISSED APPROACH: Climb to 4400 then climbing left turn to 5300 direct SAE VOR/DME and hold, continue climb-in-hold to 5300.
---------------	---

AWOS-3 121.275	DENVER CENTER 132.7 397.85	UNICOM 122.8 (CTAF) 0
-------------------	-------------------------------	--------------------------



NC-2, 10 JUL 2025 to 07 AUG 2025

NC-2, 10 JUL 2025 to 07 AUG 2025