

WAAS CH <b>57903</b> <b>W08A</b>	APP CRS <b>083°</b>	Rwy Idg <b>5102</b> TDZE <b>3260</b> Apt Elev <b>3279</b>
--	------------------------	---

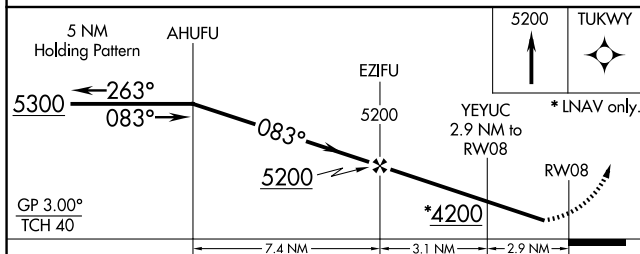
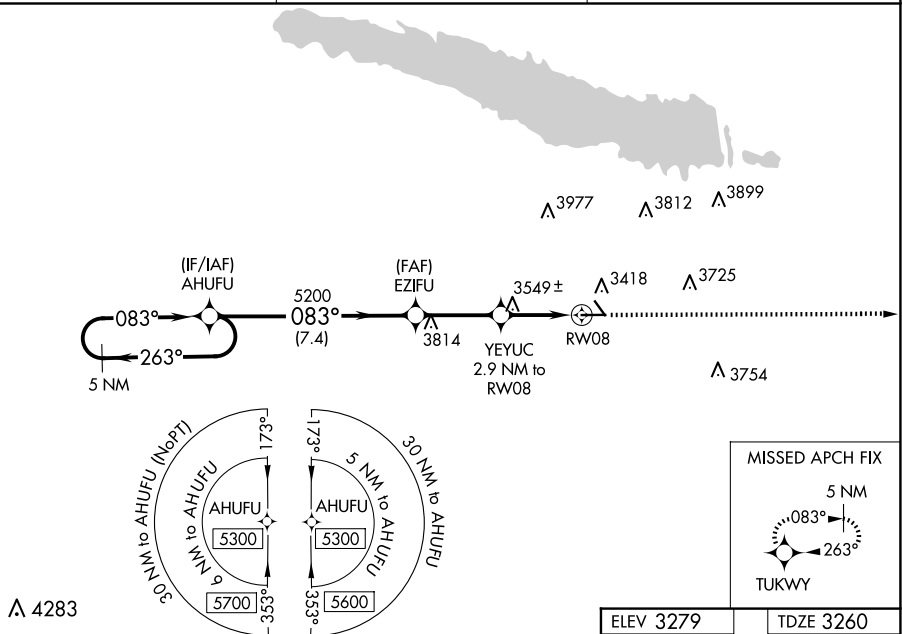
RNAV (GPS) RWY 8  
SEARLE FLD (OGA)

RNP APCH.

**▼** For uncompensated Baro-VNAV systems, LNAV/VNAV NA below -21°C or above 54°C. When local altimeter setting not received, use Imperial altimeter setting and increase all DA 86 feet and all MDA 100 feet, increase LPV all Cats visibility ½ SM, LNAV/VNAV all Cats and Circling Cat B visibility ¼ SM. Baro-VNAV NA when using Imperial altimeter setting.

**MISSED APPROACH:**  
Climb to 5200 direct  
TUKWY and hold.

AWOS-3 <b>121.275</b>	DENVER CENTER <b>132.7 397.85</b>	UNICOM <b>122.8 (CTAF) 0</b>
--------------------------	--------------------------------------	---------------------------------



CATEGORY		A	B	C	D
LPV	DA	3510-1	250 (300-1)	NA	
LNAV/ VNAV	DA	3865-2¼	605 (600-2¼)	NA	
LNAV	MDA	3800-1	540 (600-1)	NA	
CIRCLING		3940-1 661 (700-1)	4000-1 721 (800-1)	NA	

