

WAAS
CH **53303**
W26A

APP CRS
263°

Rwy Idg
TDZE
Apt Elev
5102
3254
3279

RNAV (GPS) RWY 26

SEARLE FLD (OGA)

RNP APCH.

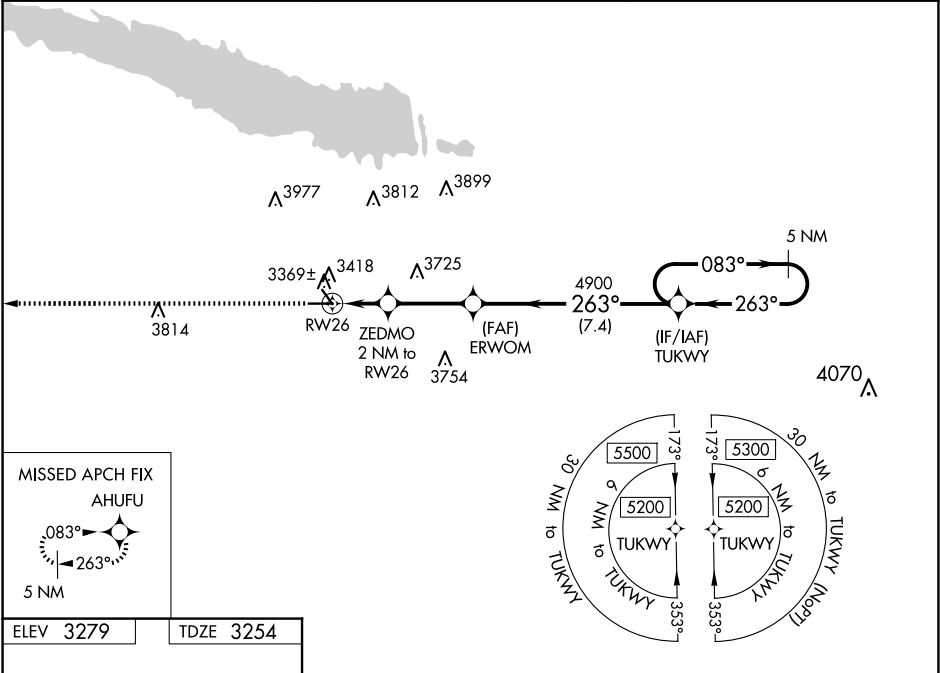
▼

⚠

When local altimeter setting not received, use Imperial altimeter setting and increase all DA 86 feet and all MDA 100 feet, increase LPV all Cats visibility ¼ SM, LNAV/VNAV all Cats and Circling Cat B visibility ¼ SM. VDP and Baro-VNAV NA when using Imperial altimeter setting. For uncompensated Baro-VNAV systems, LNAV/VNAV NA below -21°C or above 54°C.

MISSED APPROACH:
Climb to 5300 direct
AHUFU and hold.

AWOS-3 121.275	DENVER CENTER 132.7 397.85	UNICOM 122.8 (CTAF) ①
--------------------------	--------------------------------------	---------------------------------



ELEV 3279

TDZE 3254

MISSED APCH FIX
AHUFU

083°

263°

5 NM

5300

AHUFU

*LNAV only.

ZEDMO 2 NM to RW26

*1 NM to RW26

RW26

1 NM

1 NM

3.1 NM

7.4 NM

ERWOM

4900

3900*

TUKWY

5 NM Holding Pattern

083°

263°

5200

GP 3.00° TCH 48

MIRL Rwy 8-26 and 13-31 ①

5102 X 75

2700 X 60

0.9% UP

0.3% UP

263° to RW26

CATEGORY	A	B	C	D
LPV DA	3504-1	250 (300-1)		NA
LNAV/VNAV DA	3540-1	286 (300-1)		NA
LNAV MDA	3620-1	366 (400-1)		NA
CIRCLING	3940-1 661 (700-1)	4000-1 721 (800-1)		NA