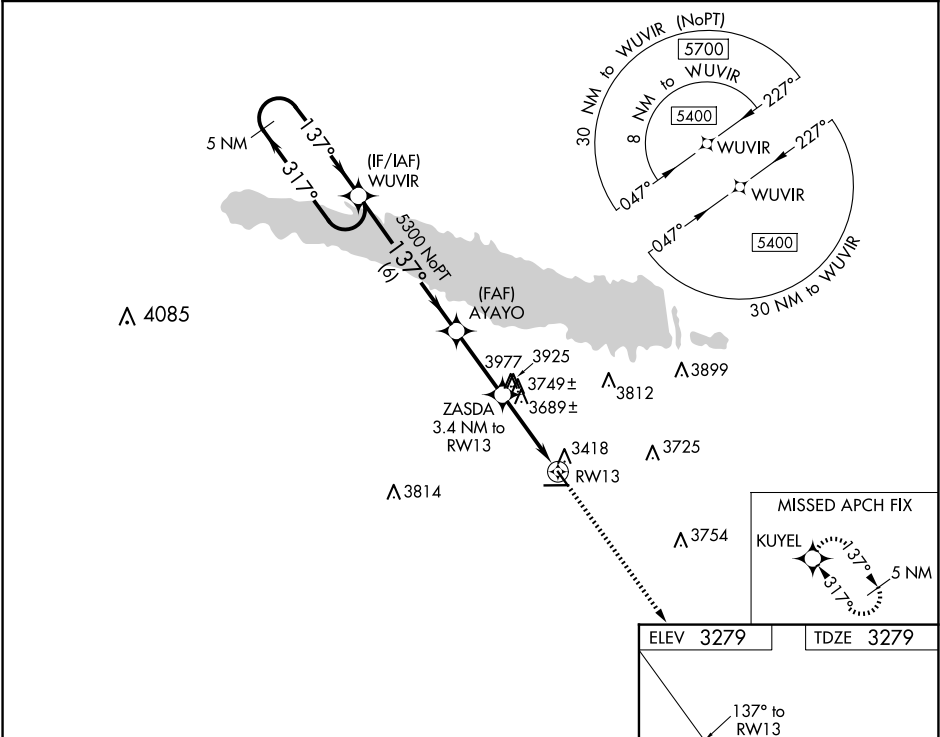


WAAS CH <b>93531</b> <b>W13A</b>	APP CRS <b>137°</b>	Rwy Idg TDZE Apt Elev	<b>3700</b> <b>3279</b> <b>3279</b>
--	------------------------	-----------------------------	---

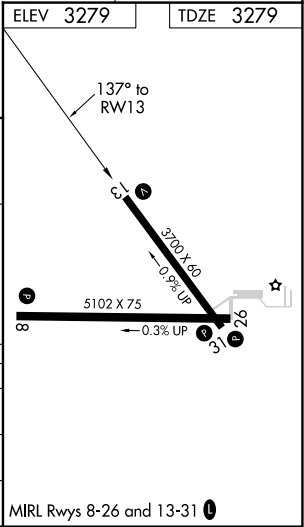
RNAV (GPS) RWY 13

SEARLE FLD (OGA)

RNP APCH. When local altimeter setting not received, use Imperial altimeter setting and increase all MDA 100 feet, increase LP, LNAV and Circling Cat B visibility to 1¼. VDP NA with Imperial altimeter setting.		MISSED APPROACH: Climb to 5500 direct KUYEL and hold.
AWOS-3 <b>121.275</b>	DENVER CENTER <b>132.7 397.85</b>	UNICOM <b>122.8 (CTAF) 1</b>



5 NM Holding Pattern		WUVIR	VGS and descent angles not coincident (VGS Angle 3.50/TCH 40).		5500	KUYEL
5400		317°	137°	137°	AYAYO	ZASDA 3.4 NM to RW13
		5300	3.16° TCH 40	4460	1.8 NM to RW31	
		6 NM	2.8 NM	1.6 NM	1.8 NM	
CATEGORY	A	B	C	D		
LP MDA	3940-1	661 (700-1)	NA			
LNAV MDA	4000-1	721 (800-1)	NA			
CIRCLING	4000-1	721 (800-1)	NA			



NC-2, 10 JUL 2025 to 07 AUG 2025

NC-2, 10 JUL 2025 to 07 AUG 2025