

APP CRS 1990	Rwy Idg TDZE Apt Elev	2801 1116 1116
-----------------	-----------------------------	----------------------

RNAV (GPS) RWY 20
JAMES G WHITING MEML FLD (MEY)

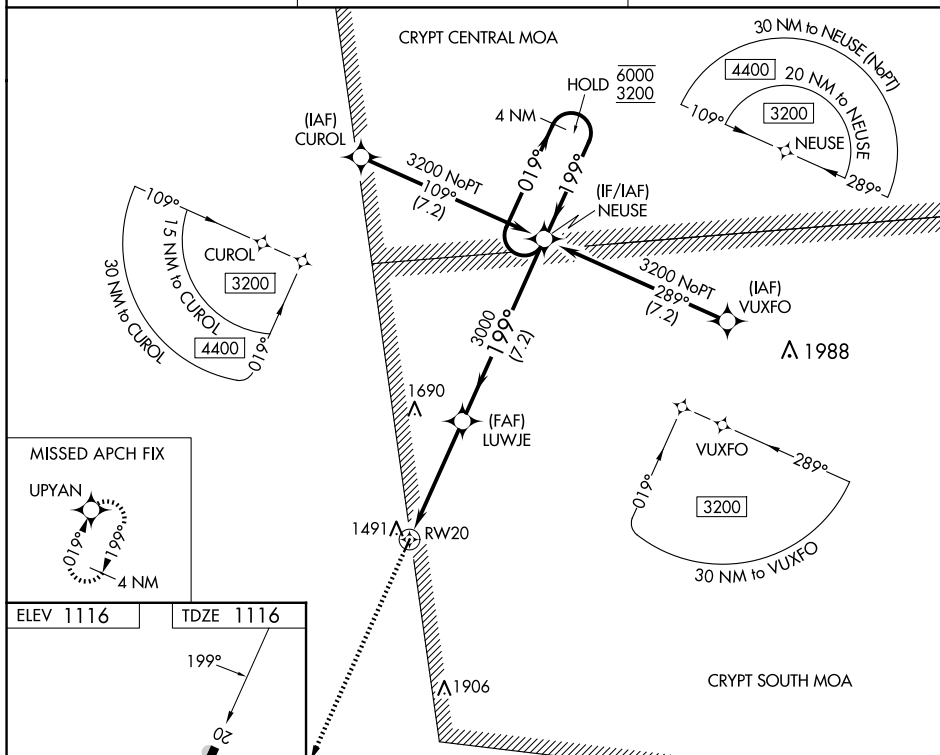
RNP APCH - GPS.

NA Procedure NA at night. Rwy 20 helicopter visibility reduction below 1 SM NA. Use Sioux City altimeter setting, when not received use Denison altimeter setting and increase all MDAs 20 feet and increase visibility LNAV Cat C ½ SM and visibility Circling Cat C ¼ SM.

MISSED APPROACH: Climb to 3100
direct UPYAN and hold.

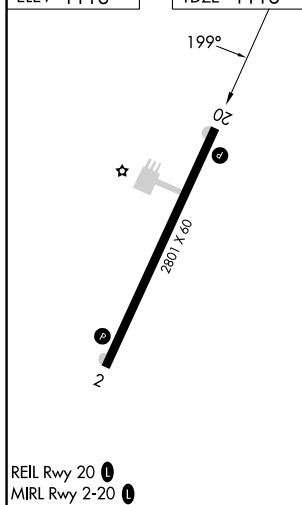
SUX ASOS
119.45 270.8

SIOUX CITY APP CON★
 124.6 307.0

UNICOM
122.8 (CTAF) **L**

ELEV 1116

TDZF 1116



REIL Rwy 20 **L**
MIRL Rwy 2-20 **L**

CATEGORY	A	B	C	D
LN AV MDA	1860-1 744 (800-1)	1860-1¼ 744 (800-1¼)	1860-2 744 (800-2)	NA
C CIRCLING	1880-1 764 (800-1)	1940-1¼ 824 (900-1¼)	1980-2½ 864 (900-2½)	NA