

WAAS CH 58321 W33A	APP CRS 330°	Rwy Ldg TDZE Apt Elev	5000 1713 1718
--	------------------------	-----------------------------	---

RNAV (GPS) RWY 33

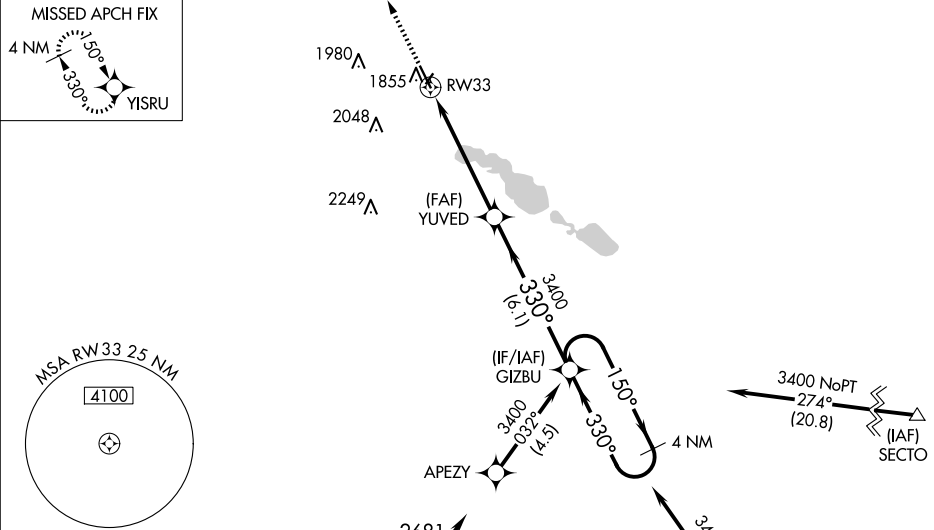
MADISON MUNI (MDS)

RNP APCH - GPS.

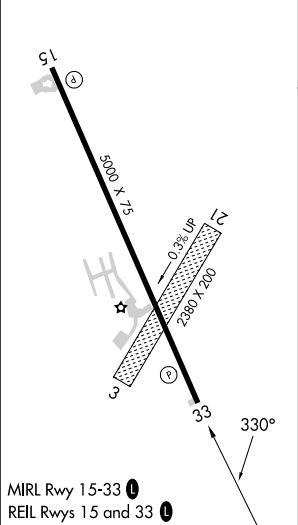
▼ For uncompensated Baro-VNAV systems, LNAV/VNAV NA below -18°C or above 33°C. Rwy 33
▲ helicopter visibility reduction below ¾ SM NA. When local altimeter setting not received, use Brookings
altimeter setting: increase LPV DA to 2021 feet; increase LNAV/VNAV DA to 2071 feet and all
visibilities ¼ SM; increase all MDAs 60 feet and visibility LNAV and Circling Cats C and D ¼ SM.
Circling NA to Rwy's 3 and 21. Baro-VNAV NA when using Brookings altimeter setting.


MISSED APPROACH:
Climb to 3400 direct
YISRU and hold.

AWOS-3 118.35	MINNEAPOLIS CENTER 132.05 317.4	GCO 121.725	UNICOM 122.8 (CTAF) 
-------------------------	---	-----------------------	---



ELEV 1718	TDZE 1713
-----------	-----------



3400	YISRU	YUVED	GIZBU	4 NM Holding Pattern
↑		3400		
1.2 NM to RW33		330°	150°	3400
		3400	330°	
1.2	4 NM	6.1 NM		
CATEGORY	A	B	C	D
LPV DA	1963-1 250 (300-1)			
LNAV/VNAV DA	2013-1 300 (300-1)			
LNAV MDA	2120-1	407 (500-1)	2120-1½	407 (500-1½)
CIRCLING	2180-1	462 (500-1)	2400-2 682 (700-2)	2400-2¼ 682 (700-2¼)