

WAAS CH 63216 W15A	APP CRS 151°	Rwy Idg TDZE 236 Apt Elev 236
--	------------------------	---

RNAV (GPS) RWY 15

RICHMOND EXEC/CHESTERFIELD COUNTY (F'CI)

RNP APCH.

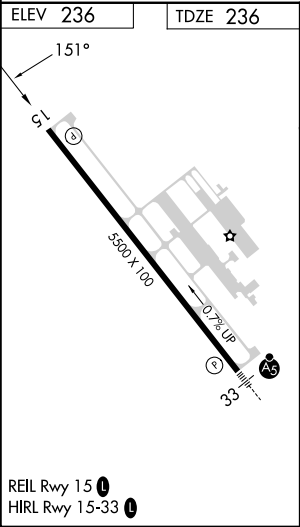
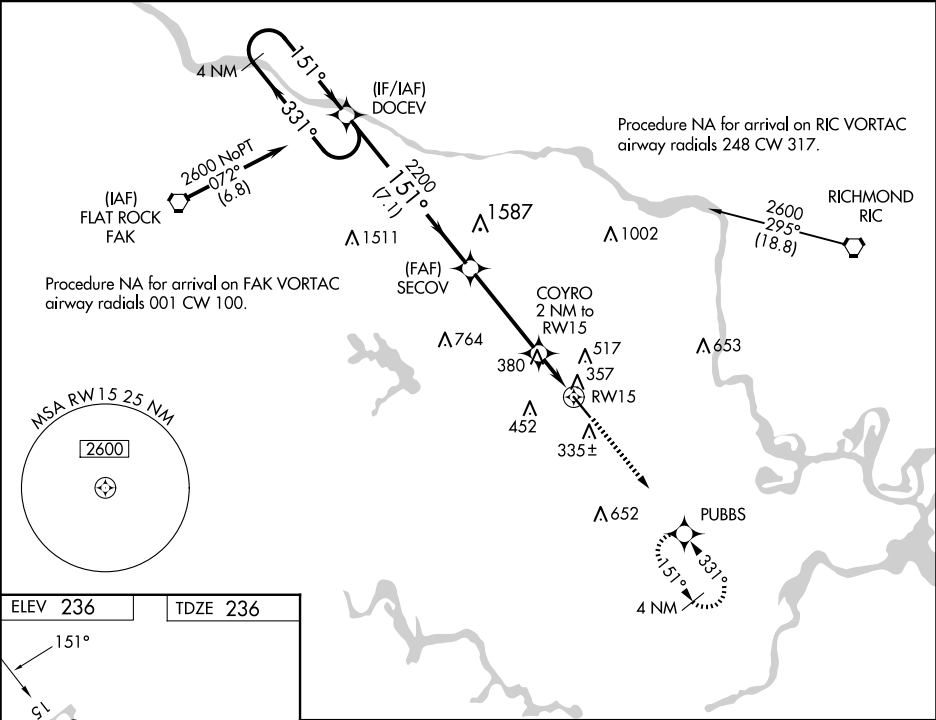
▽

△NA

For uncompensated Baro-VNAV systems, LNAV/VNAV NA below -15°C or above 54°C. When local altimeter setting not received, use Richmond Intl altimeter setting and increase all DA 36 feet, and all MDA 40 feet, increase LNAV/VNAV all Cats visibility ¼ mile. VDP and Baro-VNAV NA when using Richmond Intl altimeter setting.

MISSED APPROACH: Climb to 2000 direct PUBBS and hold.

AWOS-3PT 128.625	POTOMAC APP CON 126.75 307.2	CLNC DEL 124.6	UNICOM 123.05 (CTAF) 1
----------------------------	--	--------------------------	----------------------------------



4 NM Holding Pattern				DOCEV	2200	SECOV	2200	COYRO 2 NM to RW15	*1.3 NM to RW15	RW15	2000	PUBBS
2600 ← 331° 151° →				151°		2200		*900		*LNAV only.		
GP 3.00° TCH 43				7.1 NM		3.9 NM		0.7 NM		1.3 NM		
CATEGORY	A		B		C		D					
LPV DA	486-1 250 (300-1)											
LNAV/ VNAV DA	692-1½ 456 (500-1½)											
LNAV MDA	680-1 444 (500-1)				680-1¾ 444 (500-1¾)				680-1½ 444 (500-1½)			