

APP CRS
081°

Rwy Idg
4802

TDZE
912

Apt Elev
912

RNAV (GPS) RWY 8

NEIL ARMSTRONG (AXV)

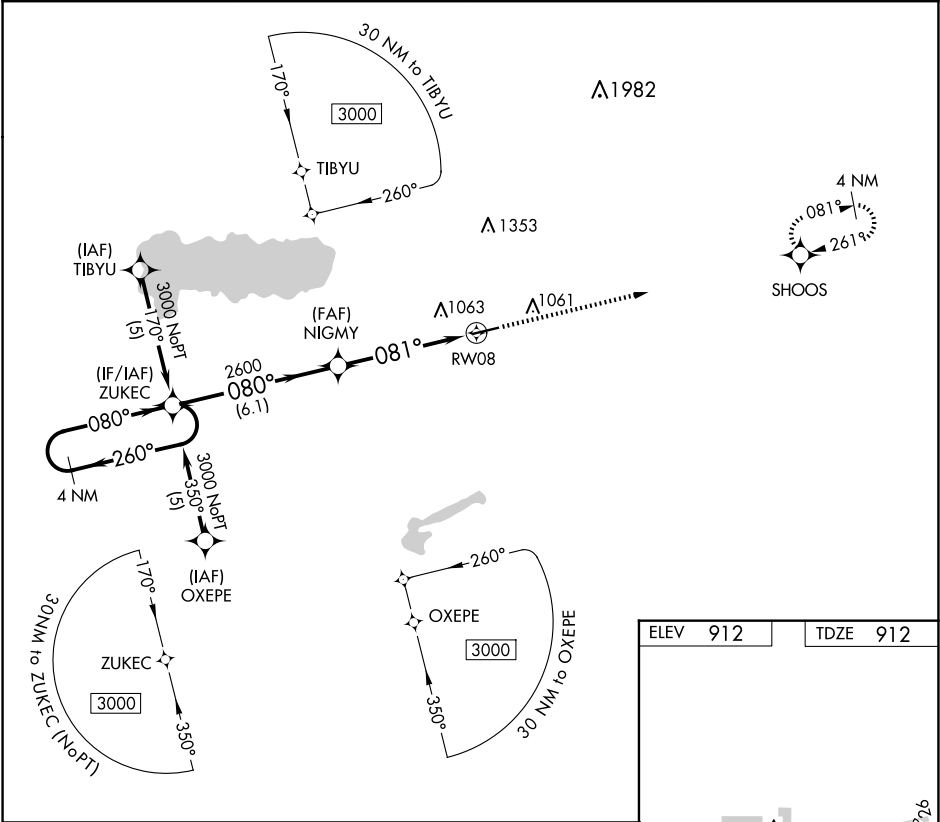
RNP APCH - GPS.

NA

Rwy 8 helicopter visibility reduction below 1 SM NA. When local altimeter setting not received, use Lima altimeter setting and increase all MDAs 60 feet and visibility Cat C ½ SM. Procedure NA at night.

MISSED APPROACH: Climb to 3000 direct SHOOS and hold.

AWOS-3PT 128.325	COLUMBUS APP CON 134.45 294.5	UNICOM 122.8 (CTAF)	122.7 0
----------------------------	---	-------------------------------	----------------



4 NM Holding Pattern

VGSI and descent angles not coincident (VGSI Angle 4.00/TCH 50).

3000

SHOOS

3000

260°

080°

ZUKEC

080°

NIGMY

2600

081°

RW08

3.04°

TCH 40

6.1 NM

5.1 NM

CATEGORY	A	B	C	D
LNAV MDA	1380-1	468 (500-1)	1380-1¼ 468 (500-1¼)	NA

MIRL Rwy 8-26 0

REIL Rws 8 and 26 0