

VORTAC EIC
117.4
Chan **121**

APP CRS
099°

Rwy Idg
TDZE
Apt Elev
N/A
N/A
278

VOR/DME-A
MINDEN (MNE)

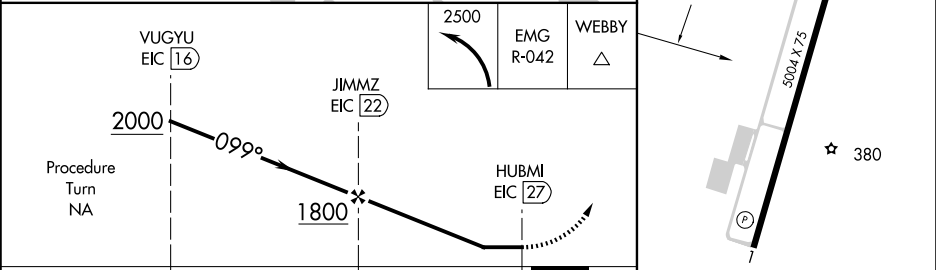
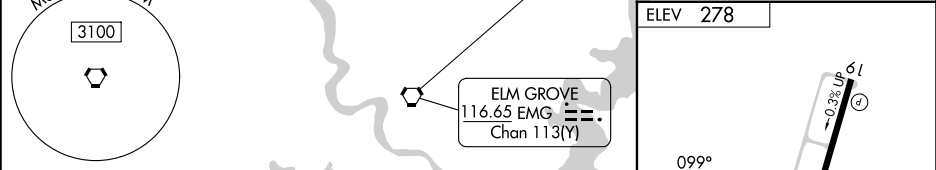
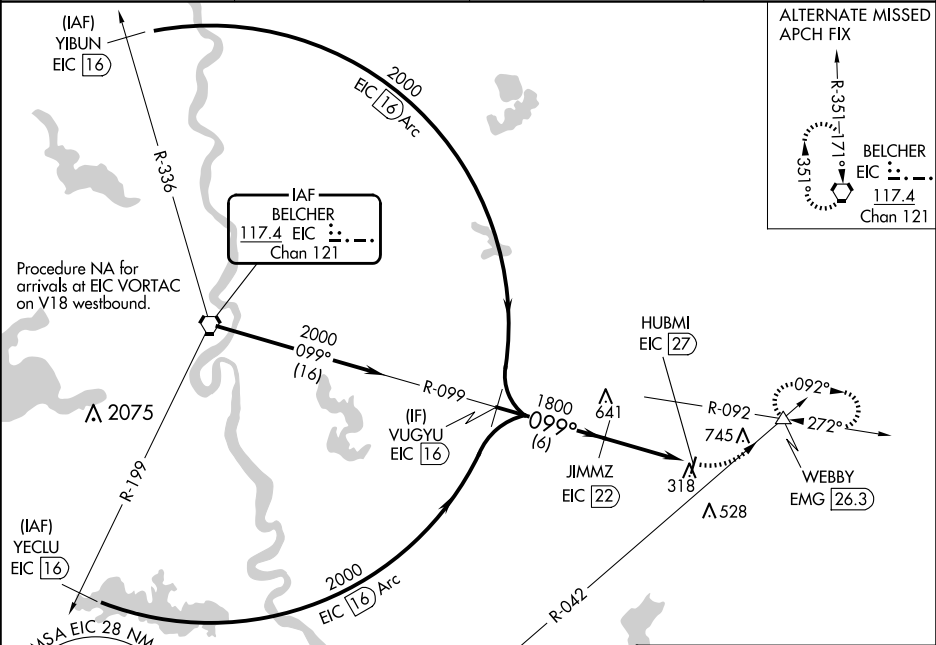
▼

▲

When VGSI inoperative, procedure NA at night. When local altimeter setting not received, use Barksdale AFB altimeter setting. Visibility reduction by helicopters NA.

MISSED APPROACH: Climbing left turn to 2500 and EMG VORTAC R-042 to WEBBY INT/EMG 26.3 DME and hold.

AWOS-3PT 119.325	SHREVEPORT APP CON 123.75 360.725	GCO 135.075	UNICOM 122.8 (CTAF)
----------------------------	---	-----------------------	-------------------------------



CATEGORY	A	B	C	D
CIRCLING	1540-1¼ 1262 (1300-1¼)	1540-1½ 1262 (1300-1½)	1540-3	1262 (1300-3)