

APP CRS
012°

Rwy Idg
TDZE
278

Apt Elev
278

RNAV (GPS) RWY 1

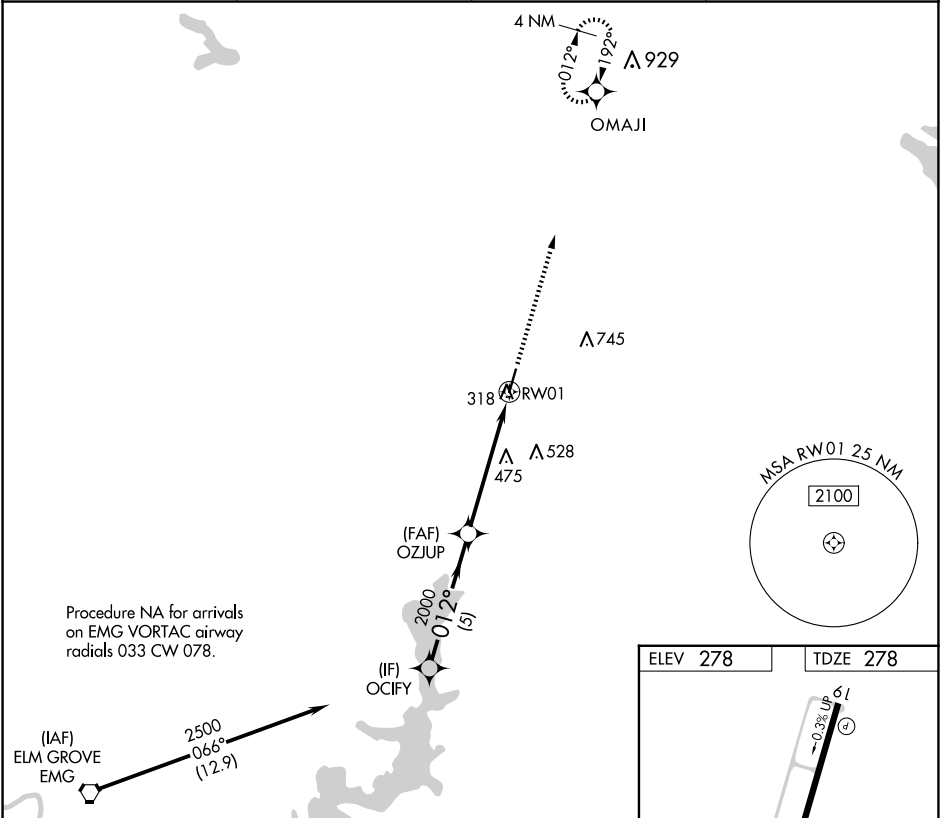
MINDEN (MNE)

⚠

When VGSi inop, procedure NA at night. DME/DME RNP-0.3 NA. Helicopter visibility reduction below 1 SM NA. When local altimeter setting not received, use Barksdale AFB altimeter setting; increase all MDA 80 feet, increase LNAV visibility Cats C/D ¾ SM and Circling visibility Cats C/D ½ SM.

MISSED APPROACH:
Climb to 2500 direct OMAJI and hold.

AWOS-3PT 119.325	SHREVEPORT APP CON 123.75 360.725	GCO 135.075	UNICOM 122.8 (CTAF) 1
----------------------------	---	-----------------------	--



OCIFY

2500

012°

2000

3.00° TCH 40

2500

OMAJI

Procedure Turn NA

5 NM

5.3 NM

CATEGORY	A	B	C	D
LNAV MDA	780-1	502 (600-1)	780-1¾	502 (600-1¾)
CIRCLING	780-1 502 (600-1)	820-1 542 (600-1)	1060-2¼ 782 (800-2¼)	1060-2½ 782 (800-2½)

ELEV 278

TDZE 278

380

012°

MIRL Rwy 1-19 **1**

REIL Rwy 1 and 19