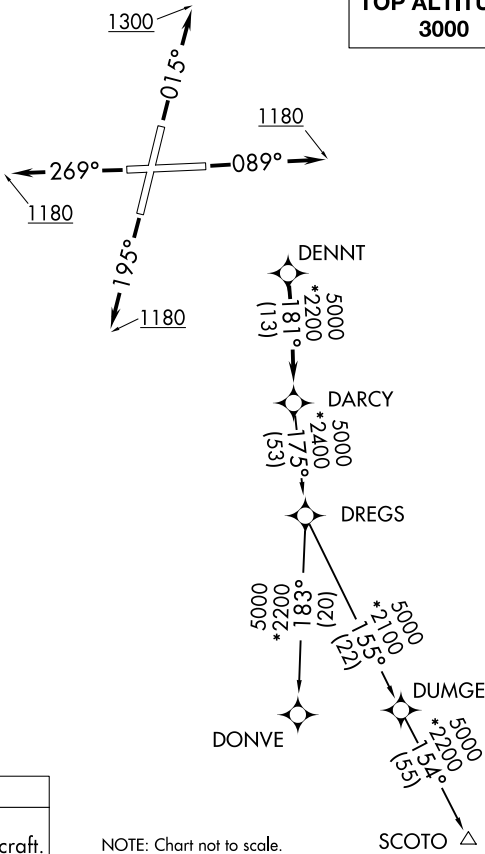


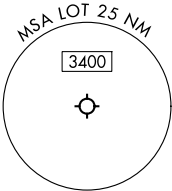
CHICAGO DEP CON  
119.35 354.075  
D-ATIS  
126.675  
GND CON  
120.425  
LEWIS TOWER ★  
134.8 (CTAF)

TOP ALTITUDE:  
3000



TAKEOFF MINIMUMS:  
Rwys 9, 20, 27: Standard.  
Rwy 2: Standard with minimum climb  
of 420' per NM to 1200.

NOTE: Turbojet departures maintain 250K  
until advised by ATC.



RNAV 1 - DME/DME/IRU or GPS.  
RADAR required.  
RADAR required for non-GPS equipped aircraft.

NOTE: Chart not to scale.

DEPARTURE ROUTE DESCRIPTION

- TAKEOFF RUNWAY 2: Climb on heading 015° to 1300, then as assigned by ATC, for vectors to DENNT, thence. . . .
- TAKEOFF RUNWAY 9: Climb on heading 089° to 1180, then as assigned by ATC, for vectors to DENNT, thence. . . .
- TAKEOFF RUNWAY 20: Climb on heading 195° to 1180, then as assigned by ATC, for vectors to DENNT, thence. . . .
- TAKEOFF RUNWAY 27: Climb on heading 269° to 1180, then as assigned by ATC, for vectors to DENNT, thence. . . .

. . . . on track 181° to DARCY, then on (transition), maintain 3000.  
Expect filed altitude 10 minutes after departure.

DONVE TRANSITION (DARCY7.DONVE):  
SCOTO TRANSITION (DARCY7.SCOTO):