

WAAS CH 86732 W31A	APP CRS 314°	Rwy Idg TDZE 1137 Apt Elev 1137
--	------------------------	---

RNAV (GPS) RWY 31

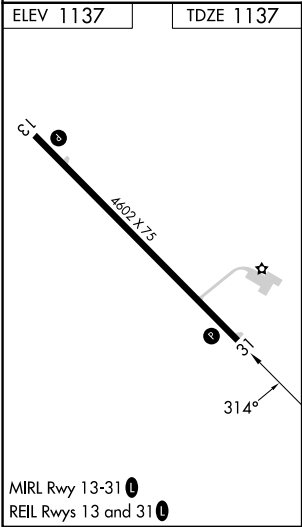
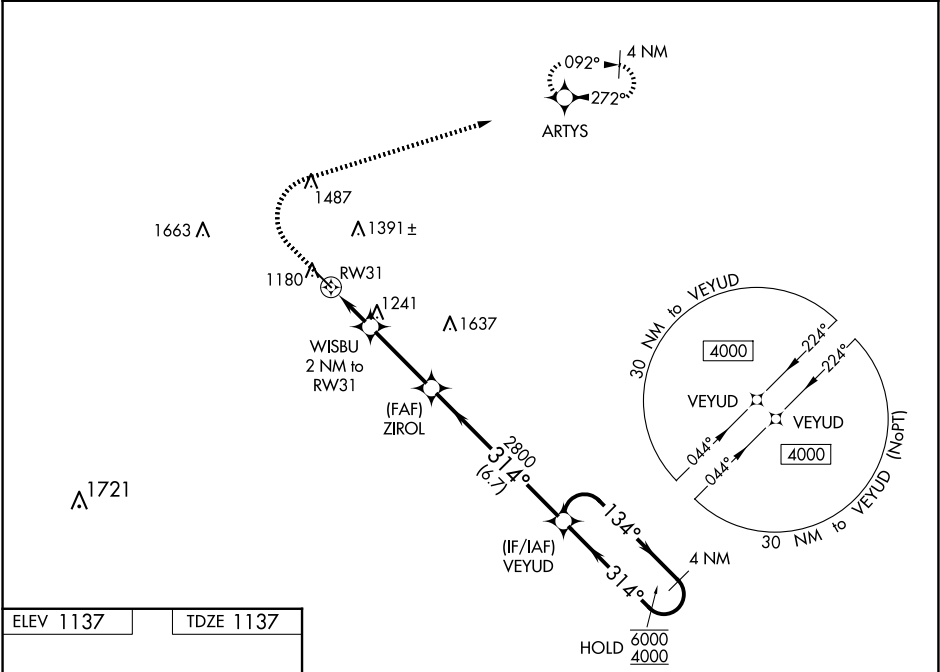
IOWA FALLS MUNI (IFA)

RNP APCH - GPS.

Rwy 31 helicopter visibility reduction below 1 SM NA. For uncompensated Baro-VNAV systems, LNAV/VNAV NA below -17°C or above 54°C. Straight-in Rwy 31 NA at night, Circling Rwy 31 NA at night.

MISSED APPROACH: Climb to 1600 then climbing right turn to 4000 direct ARTYS and hold, continue climb-in-hold to 4000.

AWOS-3 120.425	WATERLOO APP CON ★ 118.9	UNICOM 122.8 (CTAF) 0
--------------------------	------------------------------------	---------------------------------



1600	4000	ARTYS	VGSI and RNAV glidepath not coincident (VGSI Angle 3.00/TCH 44).		4 NM Holding Pattern
WISBU 2 NM to RW31		ZIROL 2800	VEYUD		134° → 6000 ← 314° 4000
RW31 1800		2800	GP 3.00° TCH 40		
1 NM to RW31		1 NM	3.1 NM	6.7 NM	
CATEGORY	A	B	C	D	
LPV DA	1387-1		250 (300-1)		
LNAV/VNAV DA	1398-1		261 (300-1)		
LNAV MDA	1500-1		363 (400-1)		
CIRCLING	1540-1 403 (500-1)	1620-1 483 (500-1)	1760-1¾ 623 (700-1¾)	1800-2 663 (700-2)	