

WAAS CH <b>53332</b> <b>W13A</b>	APP CRS <b>134°</b>	Rwy Idg <b>4602</b> TDZE <b>1130</b> Apt Elev <b>1137</b>
--	------------------------	---

RNAV (GPS) RWY 13

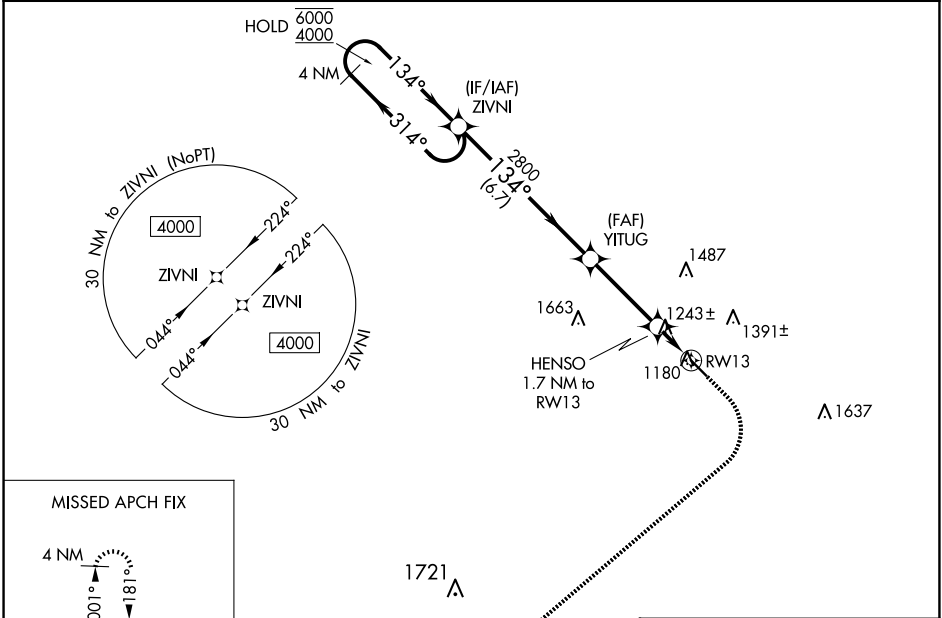
IOWA FALLS MUNI (IF A)

RNP APCH - GPS.

For uncompensated Baro-VNAV systems, LNAV/VNAV NA below -17°C or above 54°C. Circling Rwy 31 NA at night.

MISSED APPROACH: Climb to 1600 then climbing right turn to 4000 direct SHODR and hold.

AWOS-3 <b>120.425</b>	WATERLOO APP CON ★ <b>118.9</b>	UNICOM <b>122.8</b> (CTAF) <b>0</b>
--------------------------	------------------------------------	--



MISSED APCH FIX

4 NM

181°

001°

SHODR

VGSI and RNAV glidepath not coincident (VGSI Angle 3.00/TCH 44).

4 NM Holding Pattern

ZIVNI

YITUG

HENSO 1.7 NM to RWY13

1 NM to RWY13

RWY13

6000

4000

GP 3.00° TCH 40

314°

134°

2800

1700

6.7 NM

3.4 NM

0.7 NM

1 NM

CATEGORY	A	B	C	D
LPV DA		1380-1	250 (300-1)	
LNAV/VNAV DA		1395-1	265 (300-1)	
LNAV MDA		1500-1	370 (400-1)	
CIRCLING	1540-1 403 (500-1)	1620-1 483 (500-1)	1760-1¾ 623 (700-1¾)	1800-2 663 (700-2)

ELEV 1137

TDZE 1130

134°

4602 X 75

31

MIRL Rwy 13-31 **0**

REIL Rws 13 and 31 **0**