

APP CRS  
140°

Rwy Idg  
TDZE  
Apt Elev

3899  
783  
783

RNAV (GPS) RWY 14

CHILLICOTHE MUNI (CHT)

RNP APCH.

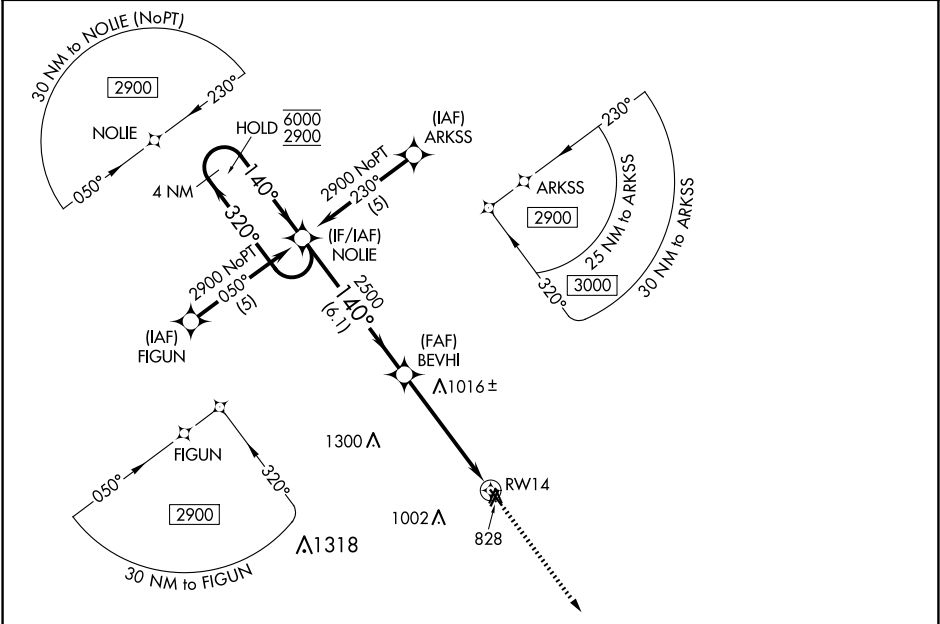
▼

NA

Rwy 14 helicopter visibility reduction below 1 SM NA.  
Procedure NA at night. When local altimeter setting not received,  
use Kansas City Intl altimeter setting and increase all MDA 200 feet.

MISSED APPROACH: Climb to 2900 direct  
TUDEE and hold.

AWOS-3 118.175	KANSAS CITY CENTER 125.25 235.975	UNICOM 122.8 (CTAF)
-------------------	--------------------------------------	------------------------



ELEV 783

TDZE 783

4 NM Holding Pattern

NOIE

BEVHI

TUDEE

2900

6000

2900

320°

140°

140°

3.04° TCH 44

2500

6.1 NM

5.2 NM

RWY 14

CATEGORY	A	B	C	D
LNAV MDA	1280-1	497 (500-1)	NA	NA