

APP CRS
044°

Rwy Idg
TDZE
Apt Elev

NA
NA
1820

RNAV (GPS)-A
SUMMERSVILLE (SXL)

RNP APCH - GPS.

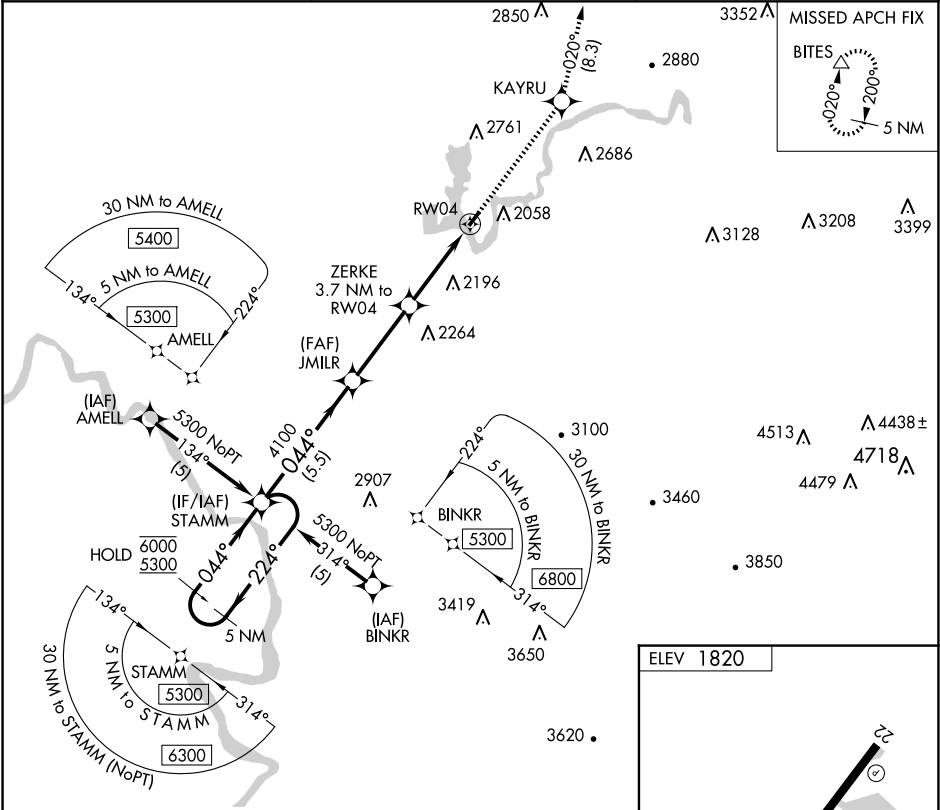
▼

NA

Procedure NA at night.
Rwy 4 and 22 helicopter visibility reduction below 1 SM NA.
Use CRW altimeter setting.

MISSED APPROACH: Climb to 4500
direct KAYRU and on track 020° to
BITES and hold.

CRW ASOS 127.6	CHARLESTON APP CON 119.2 269.125	UNICOM 122.8 (CTAF) 0
--------------------------	--	---------------------------------



5 NM Holding Pattern

4500

KAYRU

tr 020°

BITES

STAMM

6000

5300

← 224°

044° →

044°

4100

3020

3.00° TCH 50

5.5 NM

3.4 NM

3.7 NM

RW04

CATEGORY	A	B	C	D
CIRCLING	2640-1¼ 820 (900-1¼)	3020-1½ 1200 (1200-1½)	NA	

ELEV 1820

22

3015 X 50

0.4% Up

044°

MIRL Rwy 4-22 0
REIL Rws 4 and 22