

LOC X RWY 11
KETCHIKAN INTL (KTN)(PAKT)

MISSED APPROACH: Climb to 5000 direct CMJ NDB then on CMJ NDB bearing 124° to UCARU/I-ECH 6.6 DME and on ANN VOR/DME R-338 to ANN VOR/DME and hold.

T Circling NA at night. Inop table does not apply.
A Rwy 11 helicopter visibility reduction below $\frac{3}{4}$ SM NA.

Map of the area around Annette Island, Alaska, showing flight paths and terrain. The map includes elevation contours (1000, 2000, 2742, 2105, 2600, 2703, 2994) and flight paths for ANN R-309 and ANN 40. Key locations include Doozi, Annette Island, and Chan 118. A legend indicates "MISSED APCH FIX R-309" and "ANNETTE ISLAND ANN 117.1 Chan 118".

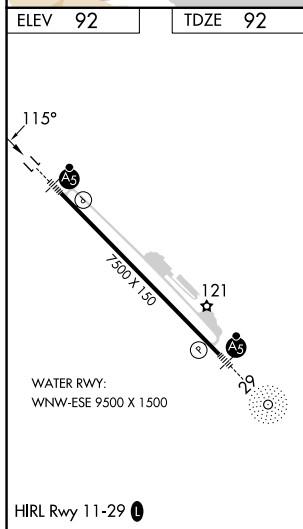


Diagram illustrating the COGUX I-ECB 13.9 frequency and its associated frequencies and symbols:

- COGUX I-ECB 13.9** (Main Frequency)
- Remain within 10 NM** (Range Limit)
- 4600** (Frequency)
- 295°** (Angle)
- 115°** (Angle)
- 4100** (Frequency)
- 3.00°** (Angle)
- TCH 50** (Channel Width)
- I-ECB 6.6** (Frequency)
- I-ECB 1.4** (Frequency)
- 7.3 NM** (Distance)
- 5.2 NM** (Distance)
- 5000** (Frequency)
- CMJ 124°** (Frequency and Angle)
- UCARU I-ECB 6.6** (Frequency)
- ANN R-338** (Frequency)
- ANN** (Frequency)