

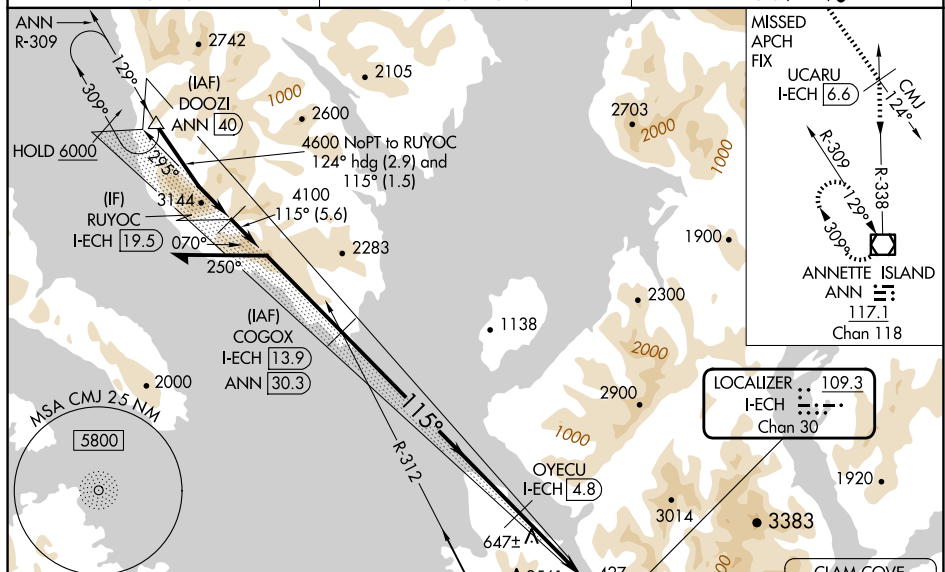
ILS Y or LOC Y RWY 11
KETCHIKAN INTL (KTN)(PAKT)

T
A Rwy 11 helicopter visibility reduction below RVR 4000 NA. For inop ALS, increase #S-ILS 11 visibility to RVR 6000.
*RVR 1800 authorized with the use of FD or AP or HUD to DA.




MISSED APPROACH: Climb to 5100 direct CMJ NDB and on CMJ NDB bearing 124° to UCARU/1-ECH 6.6 DME and on ANN VOR/DME R-338 to ANN VOR/DME and hold, continue climb-in-hold to 5100.
 Missed approach requires minimum climb of 305 feet per NM to 4000; if unable to meet climb gradient, see LOC X RWY 11.
 Missed approach requires minimum climb of 270 feet per NM to 4000; if unable to meet climb gradient, see LOC X RWY 11.
 Missed approach requires minimum climb of 235 feet per NM to 4000; if unable to meet climb gradient, see LOC X RWY 11.

KETCHIKAN RADIO
123.6 (CTAF) **L**






The diagram illustrates the layout of HIRL Rwy 11-29. At the top, two boxes indicate 'ELEV 92' and 'TDZE 92'. The runway is a thick black line with a dashed centerline, extending from the top-left to the bottom-right. A dashed line perpendicular to the runway at the top-left end is labeled '115°'. Along the runway, there are several navigational aids: a 'V' marker, a 'P' marker, a 'C' marker, and an 'A5' marker. A '121' marker is located near the bottom-right end. The runway dimensions are given as '7300 X 130' and 'WNW-ESE 9500 X 1500'. A 'HIRL Rwy 11-29' label with a '1' in a circle is at the bottom.

ANNETTE ISLAND
117.1 ANN 
Chan 118

Use I-ECH DME when
on the localizer course.
Remain
within 10 NM 09

COGOX
-ECH 13.9

5100 ↑	CMJ 	CMJ 124°	UCARU I-ECH 	ANN R-338	ANN 
-----------	--	-------------	---	--------------	--

CATEGORY	A	B	C	D
S-ILS 11*		312/24	220 (300-½)	
S-ILS 11#		481/35	389 (400-¾)	
S-LOC 11	980/40	888 (900-¾)	980-2	888 (900-2)