

WAAS CH 45844 W13A	APP CRS 131°	Rwy Idg 3599 TDZE 1650 Apt Elev 1650
--	------------------------	---

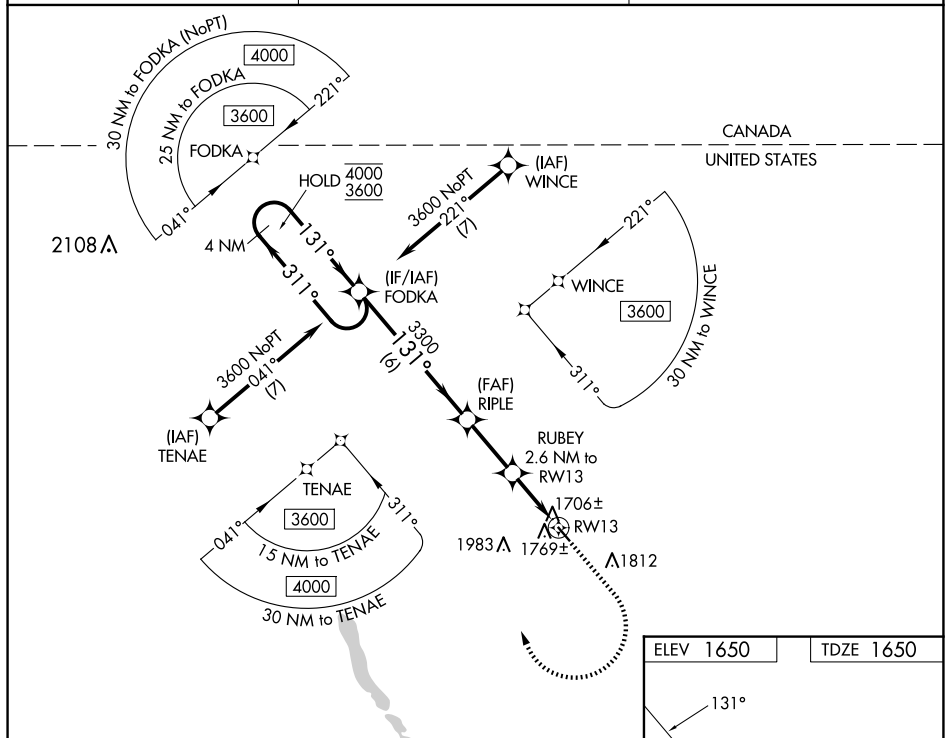
RNAV (GPS) RWY 13
MOHALL MUNI (HBC)

RNP APCH - GPS.

	Use Minot Intl altimeter setting.
---	-----------------------------------

MISSED APPROACH: Climb to 3000 then climbing right turn to 3600 direct FODKA and hold.

MOT ASOS 118.725	MINOT APP CON ★ 119.6 363.8	UNICOM 122.8 (CTAF) ①
----------------------------	---------------------------------------	---------------------------------



VGSI and RNAV glidepath not coincident
(VGSI Angle 3.00/TCH 26).

CATEGORY	A	B	C	D
LPV DA	1977-1 327 (400-1)			NA
RNAV MDA	2100-1	450 (500-1)	2100-1 $\frac{3}{8}$ 450 (500-1 $\frac{3}{8}$)	NA
C CIRCLING	2220-1	570 (600-1)	2380-2 730 (800-2)	NA

