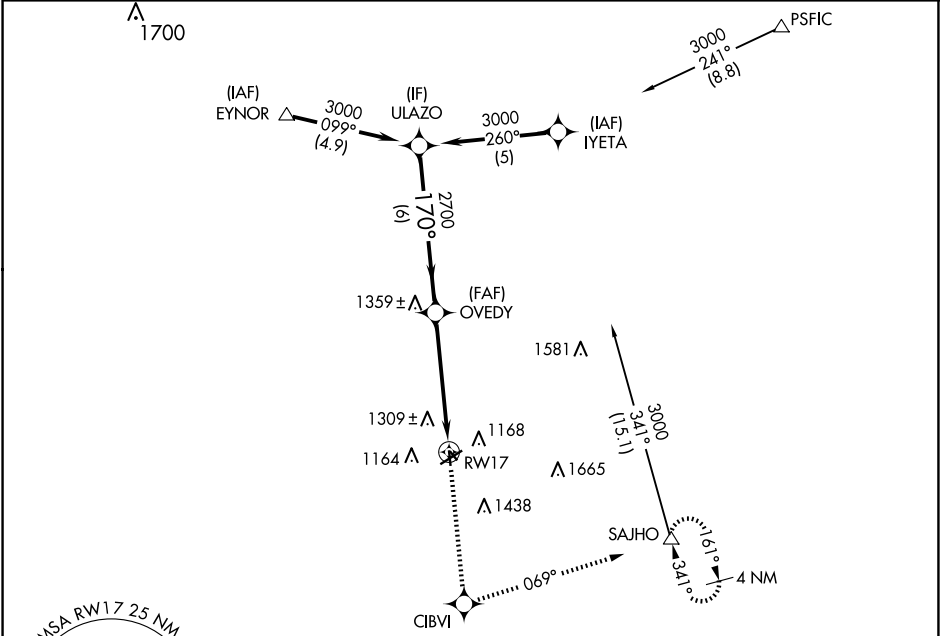


APP CRS	Rwy Idg	2901
170°	TDZE	1045
	Apt Elev	1045

RNAV (GPS) RWY 17  
RED OAK MUNI (RDK)

<p>⚠ DME/DME RNP-0.3 NA. Visibility reduction by helicopters NA. When local altimeter setting not received, use Shenandoah altimeter setting and increase all MDA 60 feet, and increase Circling Cat B visibility ¼ mile. Circling NA to Rwys 13 and 31.</p>	<p>MISSED APPROACH: Climb to 3000 direct CIBVI and left turn via track 069° to SAJHO and hold.</p>
--	--

AWOS-3P 123.925	OMAHA APP CON 124.5 263.0	UNICOM 122.8 (CTAF) 0
--------------------	------------------------------	--------------------------



Procedure  
Turn  
NA

ULAZO

3000

170°

OVEDY

2700

3.04°  
TCH 44

6 NM

5 NM

RW17

CATEGORY

A

B

C

D

UNAV MDA

1600-1 555 (600-1)

NA

CIRCLING

1620-1 575 (600-1)  
1780-1 735 (800-1)

NA

ELEV 1045 TDZE 1045

170° to RW17

MIRL Rwy 5-23 and 17-35 0

REIL Rwy 5, 17, 23, and 35 0

Diagram details: Shows runway layout with distances (2901 X 60, 2000 X 210, 5100 X 75, 35) and runway numbers (5, 17, 23, 35). Includes a star symbol and a curved arrow indicating a 170° turn to RW17.