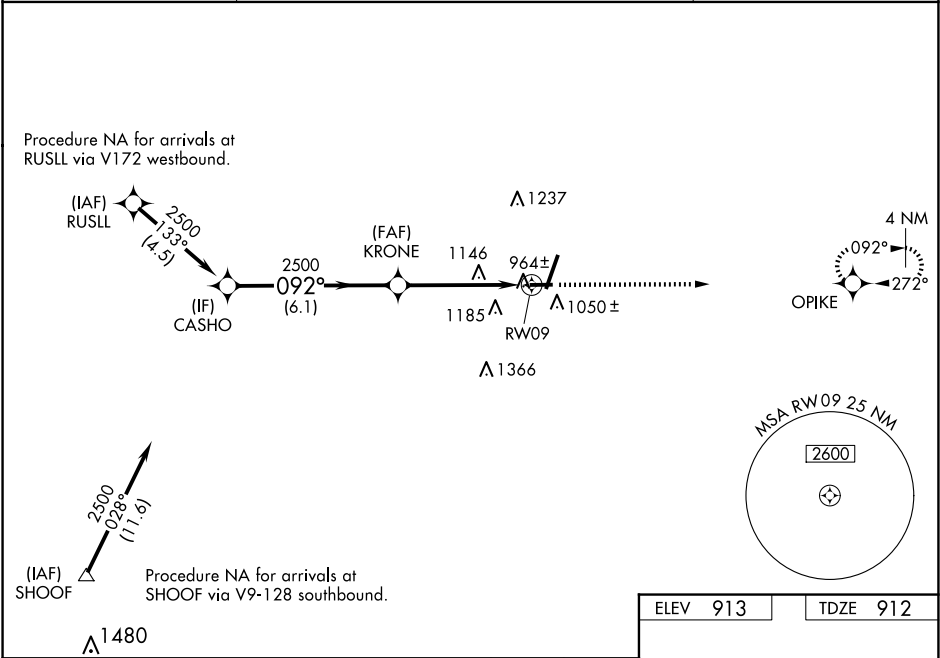


WAAS CH 82208 W09A	APP CRS 092°	Rwy Idg TDZE Apt Elev	4201 912 913
--	------------------------	-----------------------------	---

RNAV (GPS) RWY 9
DE KALB TAYLOR MUNI (DKB)

<p>▼ When local altimeter setting not received, use Aurora altimeter setting and increase all DA 61 feet and all MDA 80 feet; increase all LPV and LNAV/VNAV visibilities, LNAV Cats C/D visibility, and Circling Cats C/D visibility ¼ mile. Baro-VNAV NA when using Aurora altimeter setting. VDP NA when using Aurora altimeter setting. For uncompensated Baro-VNAV systems, LNAV/VNAV NA below -16°C (4°F) or above 47°C (116° F). DME/DME RNP-0.3 NA. Visibility reduction by helicopters NA.</p>		MISSED APPROACH: Climb to 3000 direct OPIKE and hold.
AWOS-3 119.075	CHICAGO APP CON 133.5 349.0	UNICOM 122.7 (CTAF) 0



Procedure Turn NA		VGSI and RNAV glidepath not coincident (VGSI Angle 3.00/TCH 30).		3000	OPIKE
CASHO		KRONE		*LNAV only.	
2500 092°		2500		*1.6 NM to RW09	
GP 3.00° TCH 45		RW09		7023 x 100	
6.1 NM		3.2 NM		1.6	
CATEGORY	A	B	C	D	
LPV DA	1186-1 274 (300-1)				
LNAV/VNAV DA	1543-2¼ 631 (700-2¼)				
LNAV MDA	1460-1 548 (600-1)	1460-1½ 548 (600-1½)	1460-1¾ 548 (600-1¾)		
CIRCLING	1460-1 547 (600-1)	1500-1 587 (600-1)	1600-2 687 (700-2)	1740-2¾ 827 (900-2¾)	

