

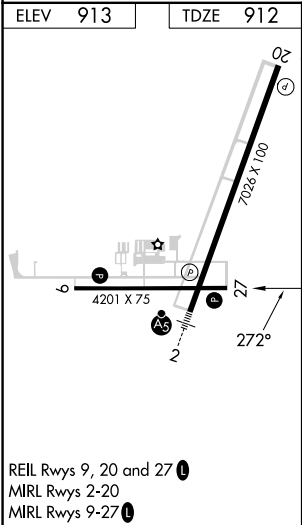
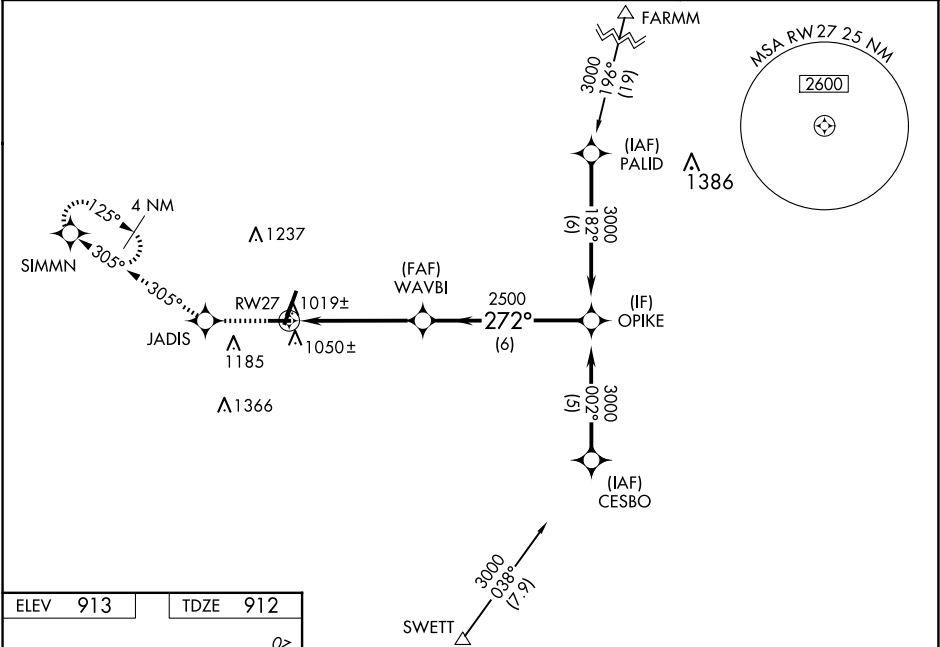
|  |                        |                             |   |
|--|------------------------|-----------------------------|---|
| WAAS<br>CH <b>72709</b><br><b>W27A</b> | APP CRS<br><b>272°</b> | Rwy Idg<br>TDZE<br>Apt Elev | <b>4201</b><br><b>912</b><br><b>913</b> |
|--|------------------------|-----------------------------|---|

RNAV (GPS) RWY 27  
DE KALB TAYLOR MUNI (DKB)

When local altimeter setting not received, use Aurora altimeter setting and increase all DA 61 feet and all MDA 80 feet; increase all LPV and LNAV/VNAV visibilities, LNAV Cats C/D visibility, and Circling Cats C/D visibility ¼ mile. Baro-VNAV NA when using Aurora altimeter setting. VDP NA when using Aurora altimeter setting. For uncompensated Baro-VNAV systems, LNAV/VNAV NA below -16° C (4°F) or above 47° C (116° F). DME/DME RNP-0.3 NA.

MISSED APPROACH: Climb to 3000 direct JADIS and via 305° track to SIMMN and hold.

|                          |                                       |                                 |
|--------------------------|---------------------------------------|---------------------------------|
| AWOS-3<br><b>119.075</b> | CHICAGO APP CON<br><b>133.5 349.0</b> | UNICOM<br><b>122.7 (CTAF) 0</b> |
|--------------------------|---------------------------------------|---------------------------------|



|  |          |  |       |       |                   |
|--|----------|--|-------|-------|-------------------|
| ELEV 913   | TDZE 912 | VGSI and RNAV glidepath not coincident (VGSI Angle 3.00/TCH 24). |       |       |                   |
| 3000   | JADIS    | 305° tr  | SIMMN | OPIKE | Procedure Turn NA |
| *LNAV only.  |          |  |       |       |                   |
| *1.3 NM to RW27  |          |  |       |       |                   |
| GP 3.00° TCH 45  |          |  |       |       |                   |
| CATEGORY A B C D   |          |  |       |       |                   |
| LPV DA 1162-3/4 250 (300-3/4)  |          |  |       |       |                   |
| LNAV/VNAV DA 1317-1 1/2 405 (500-1 1/2)  |          |  |       |       |                   |
| LNAV MDA 1360-1 448 (500-1) 1360-1 1/4 448 (500-1 1/4) 1360-1 1/2 448 (500-1 1/2)            |          |  |       |       |                   |
| CIRCLING 1360-1 447 (500-1) 1500-1 587 (600-1) 1600-2 687 (700-2) 1740-2 3/4 827 (900-2 3/4) |          |  |       |       |                   |

EC-3, 10 JUL 2025 to 07 AUG 2025

EC-3, 10 JUL 2025 to 07 AUG 2025