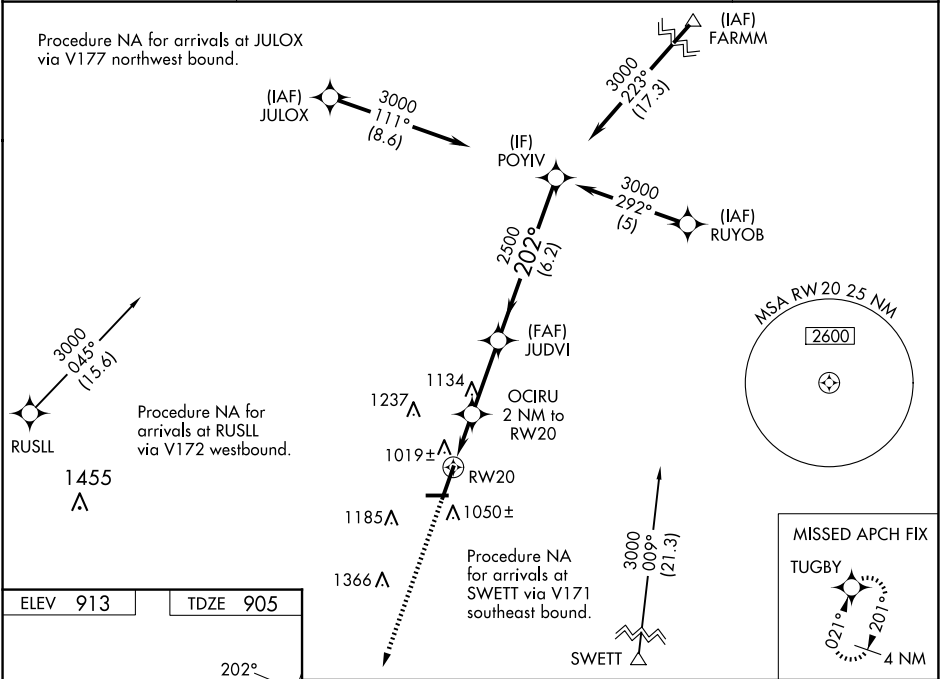


WAAS CH 50409 W20A	APP CRS 202°	Rwy Idg TDZE 905 Apt Elev 913	7026
--	------------------------	---	-------------

RNAV (GPS) RWY 20
DE KALB TAYLOR MUNI (DKB)

<p>Baro-VNAV NA when using Aurora altimeter setting. For uncompensated Baro-VNAV systems, LNAV/VNAV NA below -16°C (4°F) or above 47°C (116°F). DME/DME RNP-0.3 NA. Visibility reduction by helicopters NA. VDP NA when using Aurora altimeter setting. When local altimeter setting not received, use Aurora altimeter setting and increase all DA 61 feet and all MDA 80 feet; increase all LPV and LNAV/VNAV visibilities, LNAV Cat D visibility, and Circling Cats C/D visibility ¼ mile.</p>	<p>MISSED APPROACH: Climb to 2700 direct TUGBY and hold.</p>
---	--

AWOS-3 119.075	CHICAGO APP CON 133.5 349.0	UNICOM 122.7 (CTAF) 0
--------------------------	---------------------------------------	---------------------------------



ELEV 913	TDZE 905
----------	----------

Diagram of the runway layout showing RWY 20, RWY 27, and RWY 9/27. Distances are indicated: 4201 X 75, 7026 X 100, and 27. A star symbol is present near RWY 20.

REIL Rwy's 9, 20 and 27
MIRL Rwy's 2-20
MIRL Rwy's 9-27

<p>2700 TUGBY</p> <p>VGSI and RNAV glidepath not coincident (VGSI Angle 3.00/TCH 29).</p> <p>*LNAV only.</p> <p>RW20</p> <p>*1.2 NM to RW20</p> <p>OCIRU 2 NM to RW20</p> <p>JUDVI</p> <p>POYIV</p> <p>3000</p> <p>Procedure Turn NA</p> <p>GP 3.00°</p> <p>TCH 45</p>	<p>1.2 NM</p>	<p>0.8 NM</p>	<p>2.8 NM</p>	<p>6.2 NM</p>
CATEGORY	A	B	C	D
LPV DA	1155-¾		250 (300-¾)	
LNAV/VNAV DA	1430-1¾		525 (600-1¾)	
LNAV MDA	1320-1	415 (500-1)	1320-1¼	415 (500-1¼)
CIRCLING	1360-1 447 (500-1)	1500-1 587 (600-1)	1600-2 687 (700-2)	1740-2¾ 827 (900-2¾)

EC-3, 10 JUL 2025 to 07 AUG 2025

EC-3, 10 JUL 2025 to 07 AUG 2025