

WAAS CH <b>58109</b> <b>W02A</b>	APP CRS <b>021°</b>	Rwy Idg TDZE <b>913</b> Apt Elev <b>913</b>	<b>7026</b> <b>913</b>
--	------------------------	---	---------------------------

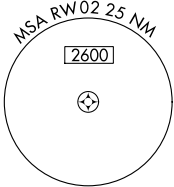
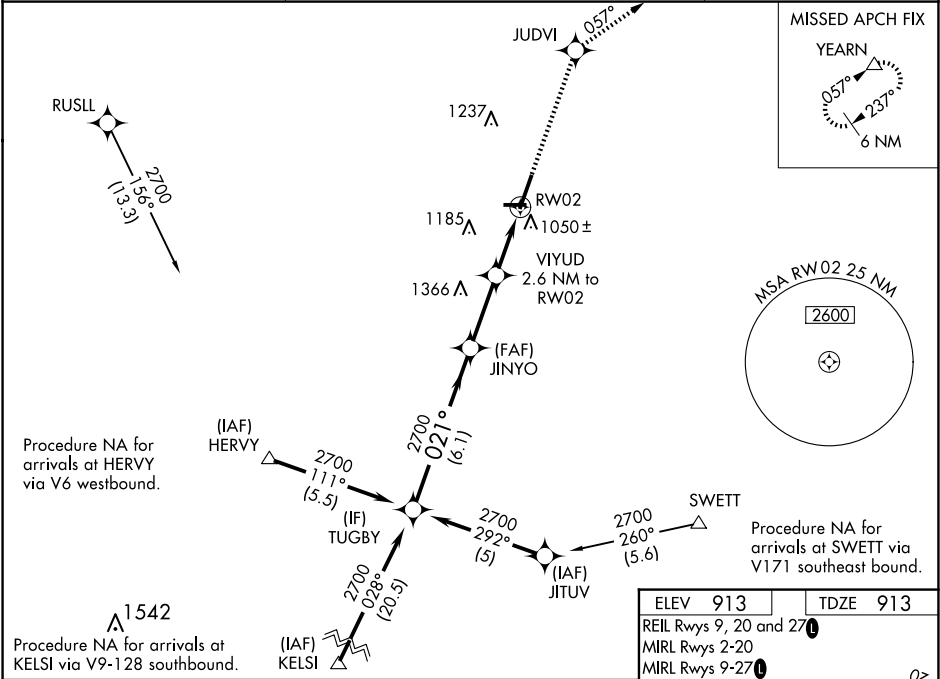
RNAV (GPS) RWY 2  
DE KALB TAYLOR MUNI (DKB)

Baro-VNAV NA when using Aurora altimeter setting. For uncompensated Baro-VNAV systems, LNAV/VNAV NA below -16°C (4°F) or above 47°C (116°F). DME/DME RNP-0.3 NA. VDP NA when using Aurora altimeter setting. When local altimeter setting not received, use Aurora altimeter setting and increase all DA 61 feet and all MDA 80 feet; increase all LPV and LNAV/VNAV visibilities, LNAV Cats C/D visibility, and Circling Cats C/D visibility ¼ mile. For inop MALSR, increase LPV all Cats visibility to 1.

MALSR

MISSED APPROACH:  
Climb to 3000 direct  
JUDVI and via 057°  
track to YEARN and  
hold.

AWOS-3 <b>119.075</b>	CHICAGO APP CON <b>133.5 349.0</b>	UNICOM <b>122.7 (CTAF) 0</b>
--------------------------	---------------------------------------	---------------------------------



ELEV 913	TDZE 913
REIL Rwy 9, 20 and 27	
MIRL Rwy 2-20	
MIRL Rwy 9-27	

Procedure Turn NA				3000	JUDVI	tr	057°	YEARN
VGSi and RNAV glidepath not coincident (VGSi Angle 3.00/TCH 53).								
TUGBY				JINYO		*LNAV only.		
2700				2700		*1800		
GP 3.00°				2700		*1.2 NM to RWY 02		
TCH 55				2700		*1.2 NM to RWY 02		
6.1 NM				2.8 NM		1.4 NM		
CATEGORY				A		B		
LPV DA				1207-½		294 (300-½)		
LNAV/VNAV DA				1360-1		447 (500-1)		
LNAV MDA				1360-½		447 (500-½)		
CIRCLING				1360-1		1500-1		
				447 (500-1)		587 (600-1)		
				1500-1		1600-2		
				587 (600-1)		687 (700-2)		
				1600-2		1740-2¾		
				687 (700-2)		827 (900-2¾)		

