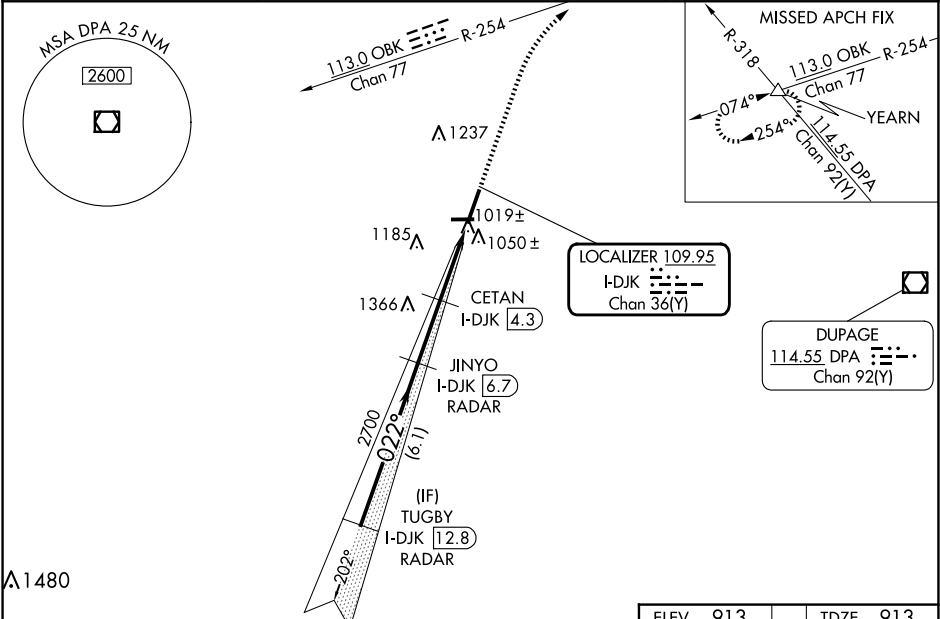


LOC/DME I-DJK 109.95 Chan 36 (Y)	APP CRS 022°	Rwy Ldg TDZE 913 Apt Elev 913
--	------------------------	---

ILS or LOC RWY 2
DE KALB TAYLOR MUNI (DKB)

RADAR required for procedure entry. DME or RADAR required.		
VDP NA with Aurora altimeter setting. When local altimeter setting not received, use Aurora altimeter setting and increase DA to 1174 feet and all MDA 80 feet; CETAN fix minimums increase Circling Cat C and D visibility ¼ SM. For inop ALS, increase S-ILS 2 all Cats visibility to ¾ SM. CETAN fix minimums: For inop ALS, increase S-LOC 2 Cat C and D visibility to 1 SM.		
AWOS-3 119.075	CHICAGO APP CON 133.5 349.0	UNICOM 122.7 (CTAF) 0



VGSi and ILS glidepath not coincident (VGSi Angle 3.00/TCH 53).				
TUGBY I-DJK 12.8 RADAR				
JINYO I-DJK 6.7 RADAR				
CETAN I-DJK 4.3				
I-DJK 2.4 I-DJK 1.3				
GS 3.00° TCH 55				
6.1 NM 2.4 NM 1.9 NM 1.1 NM				
CATEGORY	A	B	C	D
S-ILS 2	1113-½		200 (200-½)	
S-LOC 2	1900-¾ 987 (1000-¾)	1900-1 987 (1000-1)	1900-2½	987 (1000-2½)
CIRCLING	1900-1¼ 987 (1000-1¼)	1900-1½ 987 (1000-1½)	1900-3	987 (1000-3)
CETAN FIX MINIMUMS (DME REQUIRED)				
S-LOC 2	1280-½	367 (400-½)	1280-⅝	367 (400-⅝)
CIRCLING	1360-1 447 (500-1)	1500-1 587 (600-1)	1600-2 687 (700-2)	1740-2¾ 827 (900-2¾)

