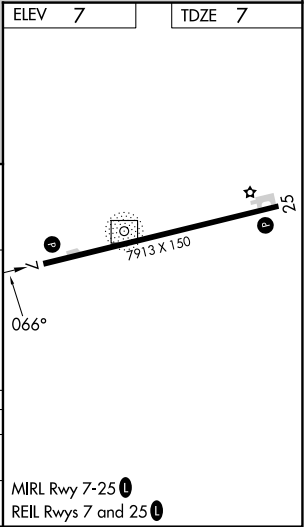
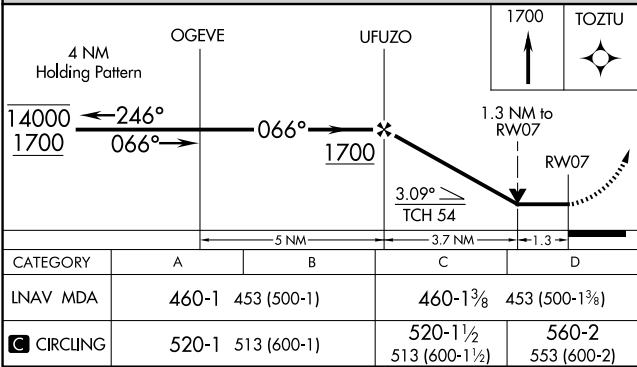
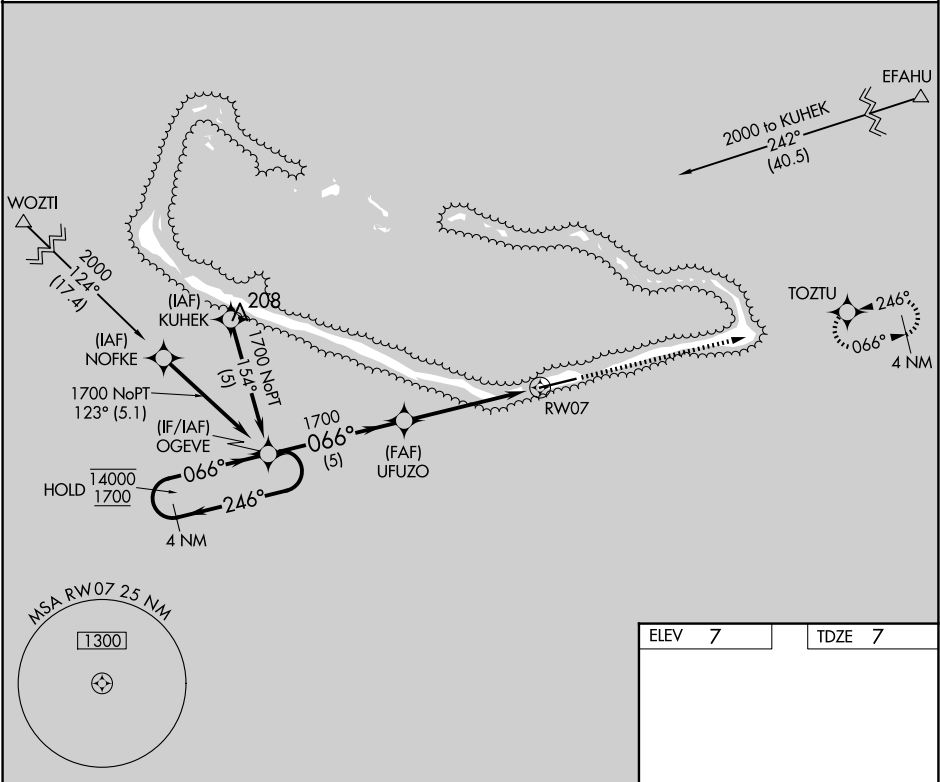


APP CRS	Rwy Ldg	7913
066°	TDZE	7
	Apt Elev	7

RNAV (GPS) RWY 7
AMATA KABUA INTL (MAJ)(PKMJ)

RNP APCH-GPS	MISSED APPROACH: Climb to 1700 direct TOZTU and hold.
Rwy 7 helicopter visibility reduction below 3/4 SM NA. Obtain local altimeter setting on CTAF; when not received, procedure NA. Uncontrolled airspace below 5500.	

MAJURO RADIO
123.6 (CTAF) 0



PAC, 12 JUN 2025 to 07 AUG 2025

PAC, 12 JUN 2025 to 07 AUG 2025