

NDB/DME MAJ <b><u>316</u></b> Chan <b>114 (116.7)</b>	APP CRS <b>249°</b>	Rwy Ldg <b>7913</b> TDZE <b>7</b> Apt Elev <b>7</b>
---	------------------------	---

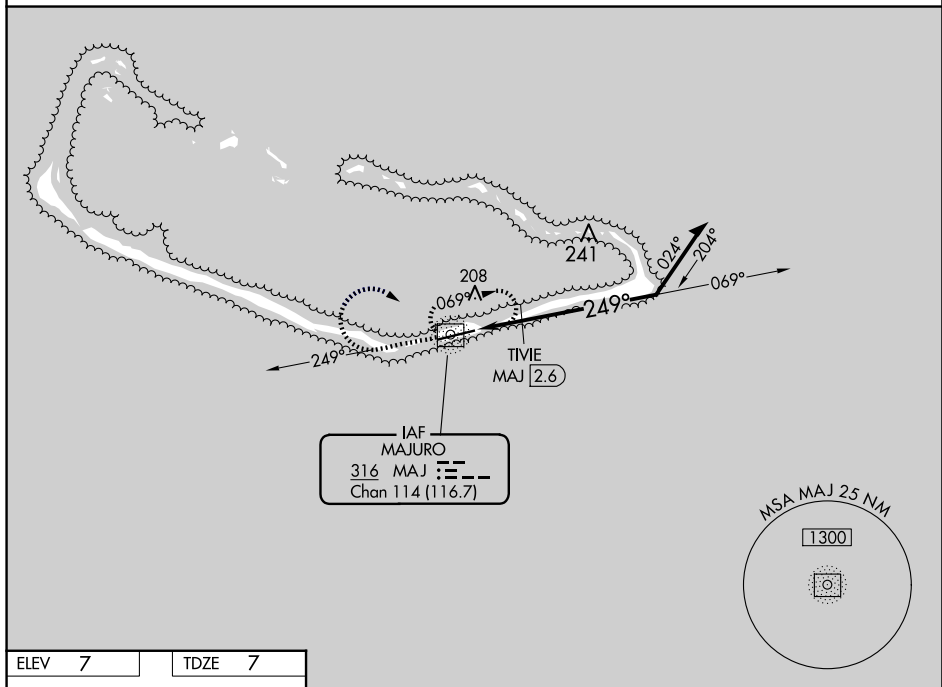
NDB RWY 25

AMATA KABUA INTL (MAJ)(PKMJ)

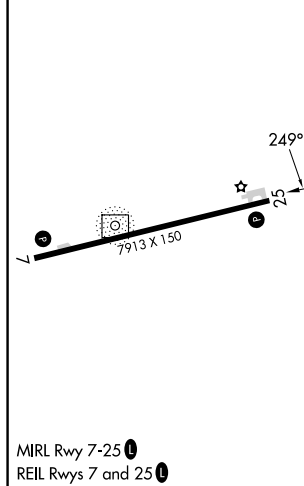
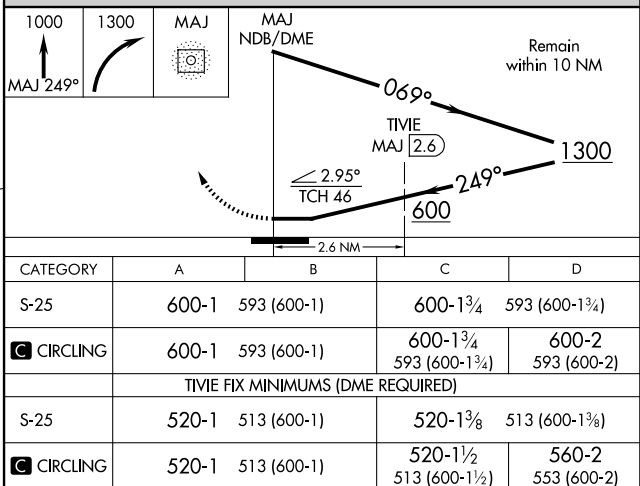
**T** Rwy 25 helicopter visibility reduction below  $\frac{3}{4}$  SM NA.  
**A** NA Obtain local altimeter setting on CTAF; when not received, procedure NA. Uncontrolled airspace below 5500.

**MISSED APPROACH:** Climb to 1000 on MAJ NDB/DME bearing 249° then climbing right turn to 1300 direct MAJ NDB/DME and hold.

MAJURO RADIO  
123.6 (CTAF) **L**



ELEV	7		TDZE	7
------	---	--	------	---

MIRL Rwy 7-25 **L**REIL Rwys 7 and 25 **L**

MAJURO ATOLL, MH

Amdt 1B 31DEC20

AMATA KABUA INTL (MAJ)(PKMJ)

07°04'N-171°16'E

NDB RWY 25