

NDB/DME YP <b>317</b>	APP CRS <b>237°</b>	Rwy Ldg <b>6000</b> TDZE <b>90</b> Apt Elev <b>91</b>
Chan <b>122 (117.5)</b>		

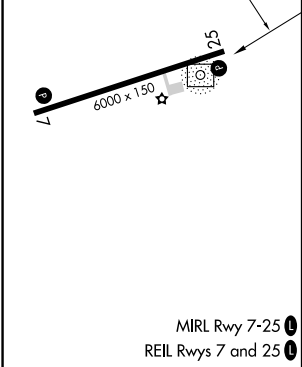
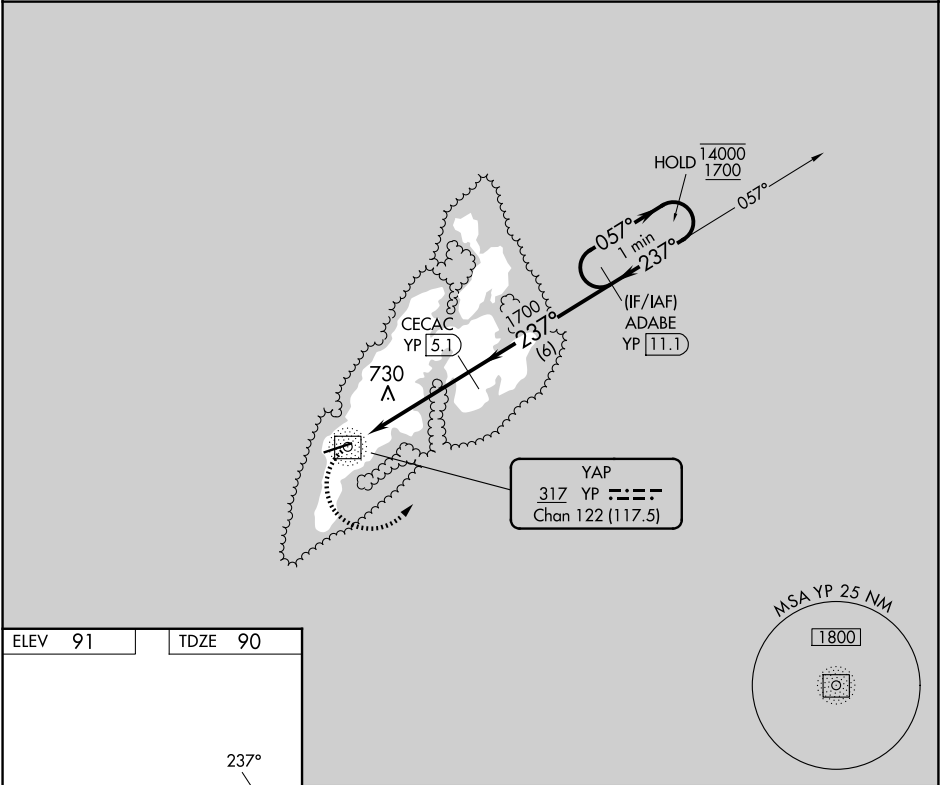
NDB/DME RWY 25

YAP INTL (T11)(PTYA)

<div><div><div></div><div></div></div><div><div></div><div></div></div></div> <div>Circling NA north of Rwy 7-25. No controlled airspace below 5500.</div>	MISSED APPROACH: Climbing left turn to 1800 on 057° bearing from YP NDB/DME to ADABE/11.1 DME and hold.
--	---

YAP RADIO

123.6 (CTAF)



	1800 YP 057°	ADABE YP 11.1	CECAC YP 5.1	ADABE YP 11.1	One Minute Holding Pattern
	YP NDB/DME	YP 3	237°	057°	14000 1700
	2.8 NM	2.1 NM	6 NM		
CATEGORY	A	B	C	D	
S-25	1040-1¼ 950 (1000-1¼)	1040-1½ 950 (1000-1½)	1040-3	950 (1000-3)	
CIRCLING	1040-1¼ 949 (1000-1¼)	1040-1½ 949 (1000-1½)	1040-3	949 (1000-3)	