

WAAS CH 77818 W07A	APP CRS 065°	Rwy Idg 5003 TDZE 147 Apt Elev 147
--	------------------------	---

RNAV (GPS) RWY 7

MARLBORO COUNTY JETPORT/H E AVENT FLD (BBP)

RNP APCH.

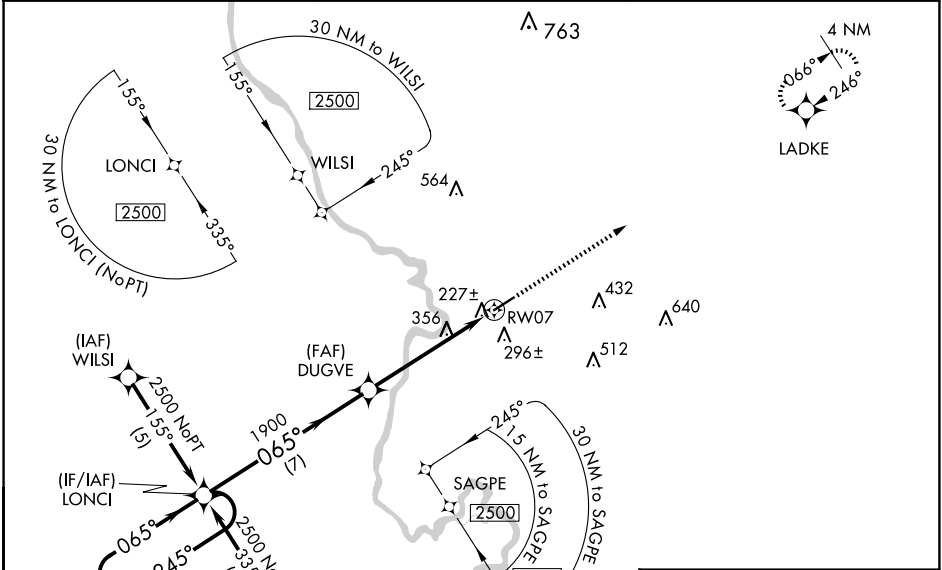
▼

Baro-VNAV NA when using Florence altimeter setting. For uncompensated Baro-VNAV systems, LNAV/VNAV NA below -15°C or above 48°C. Rwy 7 helicopter visibility reduction below ¾ SM NA. When local altimeter setting not received, use Florence altimeter setting and increase all DA 61 feet and MDA 80 feet; increase LPV all Cats, LNAV/VNAV all Cats, and LNAV Cats C and Cat D visibility ¼ mile. VDP NA with Florence altimeter setting.

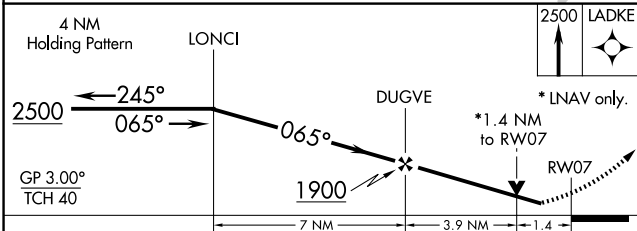
MISSED APPROACH:

Climb to 2500
direct LADKE and hold.

AWOS-3PT 123.825	FLORENCE APP CON ★ 118.6 341.7	UNICOM 122.8 (CTAF)
----------------------------	--	-------------------------------



ELEV 147	TDZE 147
----------	----------



CATEGORY	A	B	C	D
LPV DA	437-1	290 (300-1)		
LNAV/VNAV DA	507-1¼	360 (400-1¼)		
LNAV MDA	620-1	473 (500-1)	620-1¼ 473 (500-1¼)	620-1½ 473 (500-1½)

