

BENNETTSVILLE, SOUTH CAROLINA

AL-6047 (FAA)

24305

WAAS CH <b>42818</b> <b>W25A</b>	APP CRS <b>246°</b>	Rwy Idg <b>5003</b> TDZE <b>147</b> Apt Elev <b>147</b>
--	------------------------	---

RNAV (GPS) RWY 25

MARLBORO COUNTY JETPORT/H E AVENT FLD (BBP)

RNP APCH.

**V** Baro-VNAV NA when using Florence altimeter setting. For uncompensated Baro-VNAV systems, LNAV/VNAV NA below -15°C or above 47°C. Rwy 25 helicopter visibility reduction below  $\frac{3}{4}$  SM NA. When local altimeter setting not received, use Florence altimeter setting and increase all DA 61 feet and MDA 80 feet. Increase LPV all Cats, and LNAV Cat C and D visibility  $\frac{1}{4}$  mile.

**MISSED APPROACH:** Climb to 2500 direct LONCI and hold.

AWOS-3PT <b>123.825</b>	FLORENCE APP CON ★ <b>118.6 341.7</b>	UNICOM <b>122.8</b> (CTAF)
----------------------------	--	-------------------------------

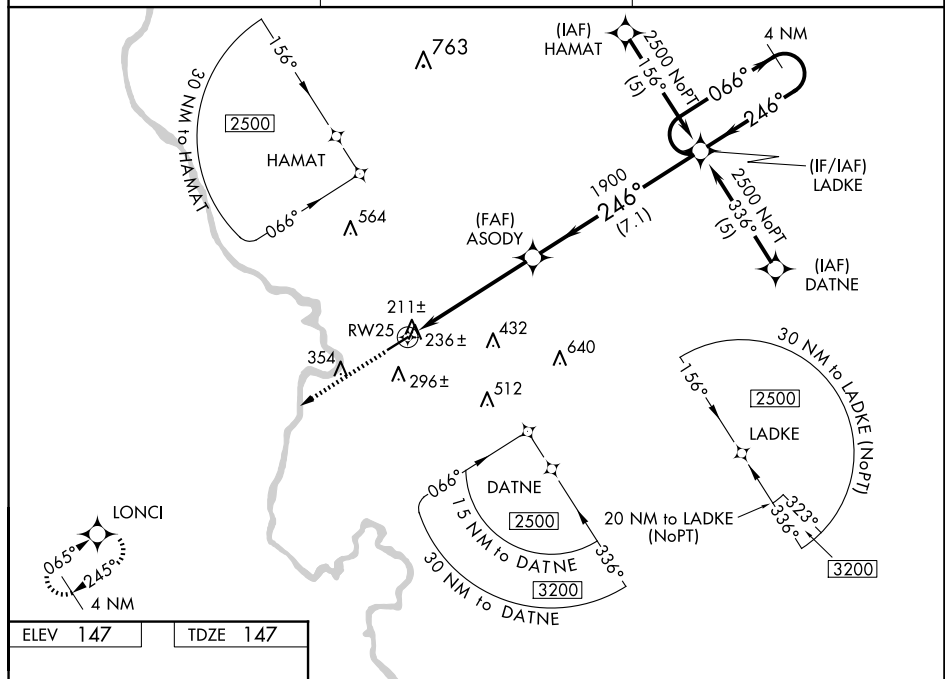


Figure 1-1 illustrates a VGS (Vertical Guidance Segment) for a 4 NM Holding Pattern. The diagram shows a holding pattern with a 4 NM radius. The VGS is defined by a 246° heading and a 1900 ft altitude. The VGS is divided into three segments: A (5.3 NM), B (7.1 NM), and C (4.0 NM). The VGS is defined by a 246° heading and a 1900 ft altitude. The VGS is defined by a 246° heading and a 1900 ft altitude.

BENNETTSVILLE, SOUTH CAROLINA

Amdt 1B 07NOV19

MARLBORO COUNTY JETPORT/H E AVENT FLD (BBP)

34°37'N-79°44'W

RNAV (GPS) RWY 25

SE-2, 10 JUL 2025 to 07 AUG 2025

SE-2, 10 JUL 2025 to 07 AUG 2025