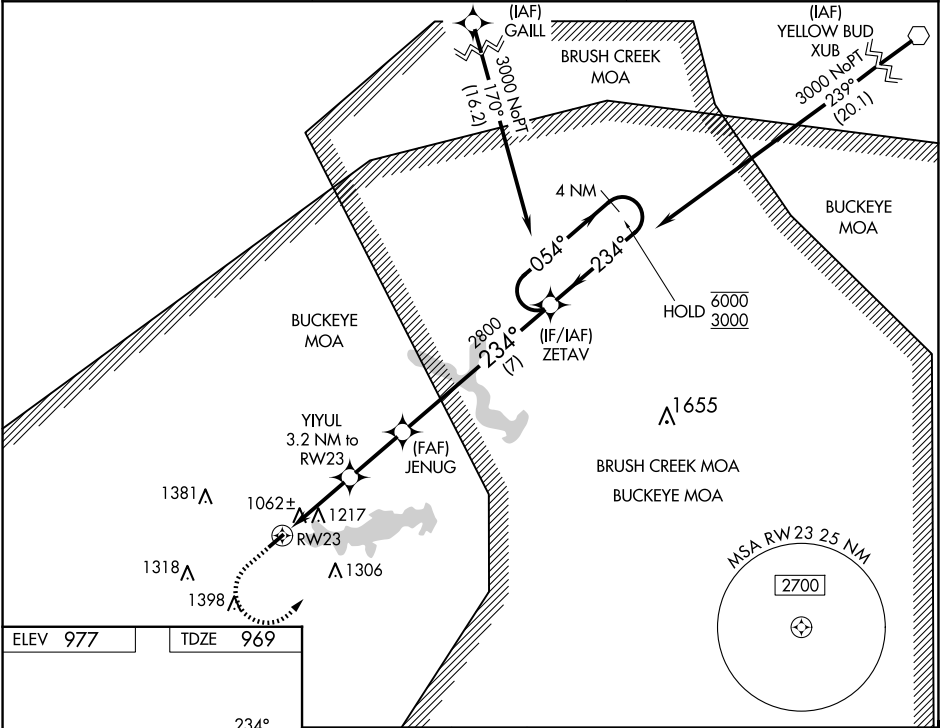


| | | |
|--|------------------------|---|
| WAAS CH 97630 W23A | APP CRS 234° | Rwy Ldg TDZE 969 Apt Elev 977 |
|--|------------------------|---|

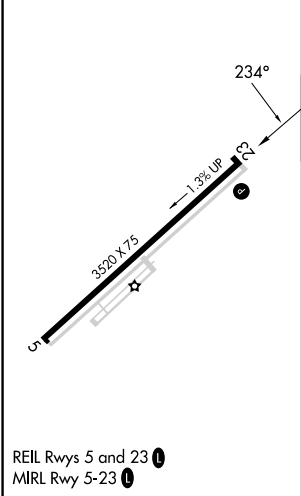
RNAV (GPS) RWY 23
HIGHLAND COUNTY (HOC)

| | | |
|-----------------|--|---|
| RNP APCH - GPS. | Procedure NA at night. Rwy 23 helicopter visibility reduction below 1 SM NA. When local altimeter setting not received, use Wilmington Air Park altimeter setting: increase all MDA 60 feet; increase LNAV Cats C and D visibility ¼ SM, increase LP Cats C and D visibility ½ SM, and increase Circling Cats C and D visibility ¼ SM. | MISSED APPROACH: Climb to 1600 then climbing left turn to 3000 direct ZETAV and hold. |
|-----------------|--|---|

| | | |
|--------------------------|---|--------------------------------|
| AWOS-3 118.175 | INDIANAPOLIS CENTER 135.575 290.5 | UNICOM 123.05 (CTAF) |
|--------------------------|---|--------------------------------|



| | |
|-----------------|-----------------|
| ELEV 977 | TDZE 969 |
|-----------------|-----------------|



| | | | | |
|---------------------------|--------------------|--------------------|--|----------------------|
| 1600 | 3000 | ZETAV | VGSI and descent angles not coincident (VGSI Angle 4.00/TCH 32). | 4 NM Holding Pattern |
| YIYUL 3.2 NM to RWY 23 | JENUG | 054° | 6000 | 234° |
| 2800 | 2000 | 3.00° TCH 55 | 2800 | 234° |
| 3.2 NM | 2.5 NM | 7 NM | | |
| CATEGORY | A | B | C | D |
| LP MDA | 1320-1 351 (400-1) | | | |
| LNAV MDA | 1480-1 511 (600-1) | | 1480-1 511 (600-1) | |
| CIRCLING | 1500-1 523 (600-1) | 1520-1 543 (600-1) | 1700-2 723 (800-2) | 1700-2 723 (800-2) |