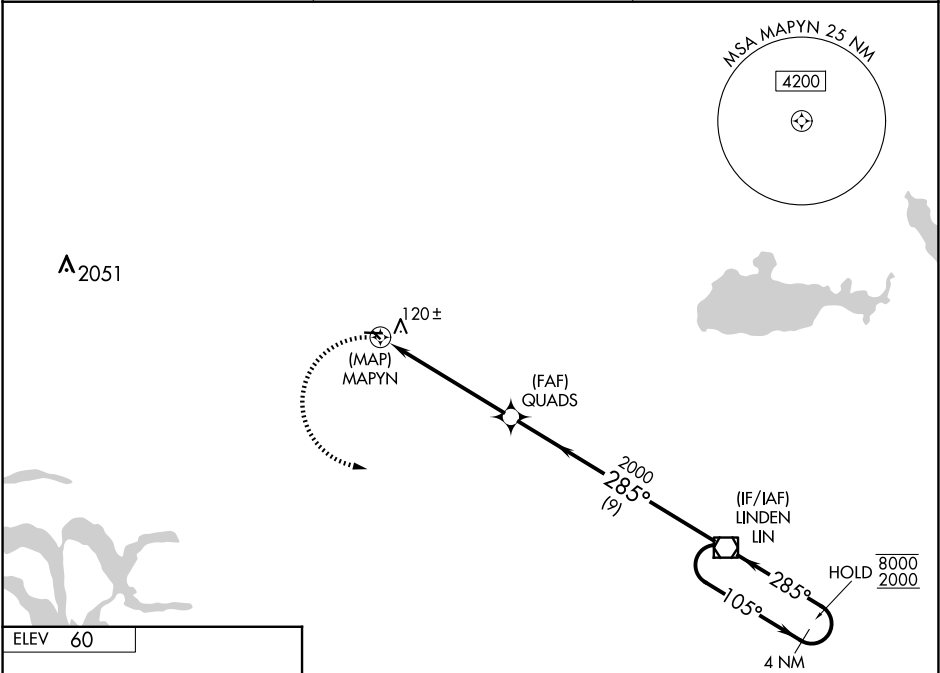


APP CRS	Rwy Idg	N/A
285°	TDZE	N/A
	Apt Elev	60

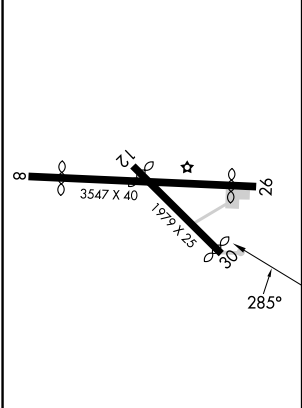
RNAV (GPS)-B
LODI (103)

RNP APCH.	MISSED APPROACH: Climbing left turn to 2000 direct LIN VOR/DME and hold.
▼ Procedure NA at night. ▲NA Use Stockton altimeter setting; when not received, use Sacramento Intl altimeter setting and increase all MDA 40 feet.	

SCK ASOS 118.25	NORCAL APP CON 125.1 363.2	CTAF 122.9
--------------------	-------------------------------	---------------



ELEV 60



LRL Rwy 8-26	2000 LIN	QUADS	LIN VOR/DME	4 NM Holding Pattern
	MAPYN	2000	285°	105° 8000 ← 285° 2000
	5.5 NM	9 NM		
CATEGORY	A	B	C	D
CIRCLING	640-1	580 (600-1)		NA