

WAAS CH <b>70541</b> <b>W28A</b>	APP CRS <b>276°</b>	Rwy Idg <b>4201</b> TDZE <b>1090</b> Apt Elev <b>1090</b>
--	------------------------	---

## RNAV (GPS) RWY 28

NEW CASTLE HENRY COUNTY MARLATT FLD (UWL)

RNP APCH - GPS.

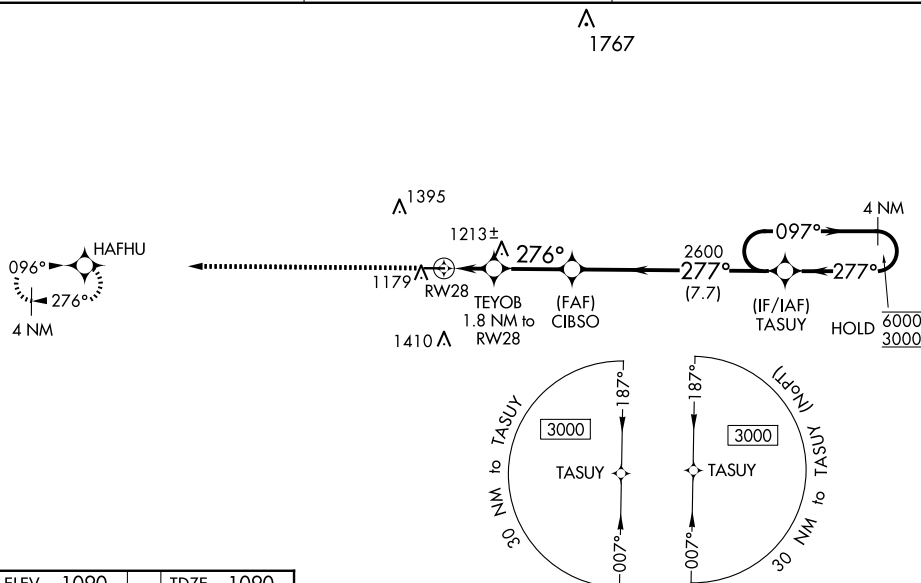
**▼** Rwy 28 helicopter visibility reduction below  $\frac{3}{4}$  SM NA. For uncompensated Baro-VNAV systems, LNAV/VNAV NA below  $-17^{\circ}\text{C}$  or above  $54^{\circ}\text{C}$ . Baro-VNAV and VDP NA when using AID altimeter setting. When local altimeter setting not received, use Anderson altimeter setting; increase LPV DA to 1412 feet; increase LNAV/VNAV DA to 1437 feet; increase all MDAs 80 feet, LNAV visibility Cat C/D  $\frac{3}{8}$  SM, and Circling visibility Cat C/D  $\frac{1}{4}$  SM.

**MISSED APPROACH:**  
Climb to 3000 direct  
HAFHU and hold.

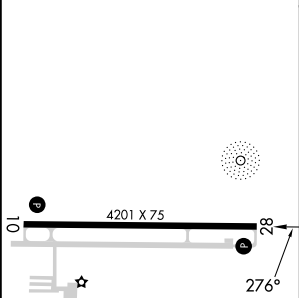
AWOS-3  
132.375

INDIANAPOLIS APP CON  
135.45 317.8

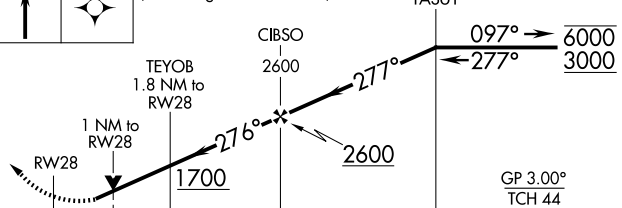
UNICOM  
123.05 (CTAF) **L**




ELEV	1090		TDZE	1090
------	------	--	------	------



3000 ▲	HAFHU ▲	VGSI and RNAV glidepath not coincident (VGSI Angle 3.00/TCH 44). TAS IV	4 NM Holding Pattern
-----------	------------	---	-------------------------



		← 1 NM	← 0.8	← 2.8 NM	← 7.7 NM	
CATEGORY		A		B	C	D
LPV	DA	1343-1			253 (300-1)	
LNAP/ VNAV	DA	1368-1			278 (300-1)	
LNAP	MDA	1480-1			390 (400-1)	
 CIRCLING		1520-1 430 (500-1)	1540-1 450 (500-1)	1720-1 <sup>3</sup> / <sub>4</sub> 630 (700-1 <sup>3</sup> / <sub>4</sub> )	1720-2 630 (700-2)	

MIRL Rwy 10-28 (L)  
REIL Rwys 10 and 28 (L)  
NEW CASTLE, INDIANA  
Amdt 1 21MAR24

NEW CASTLE HENRY COUNTY MARLATT FLD (UWL)  
39°53'N-85°20'W      **PN1AV (GPS) PWY 28**

RNAV (GPS) RWY 28