

WAAS CH 82041 W10A	APP CRS 096°	Rwy Idg TDZE 1089 Apt Elev 1090
--	------------------------	---

RNAV (GPS) RWY 10

NEW CASTLE HENRY COUNTY MARLATT FLD (UWL)

RNP APCH - GPS.

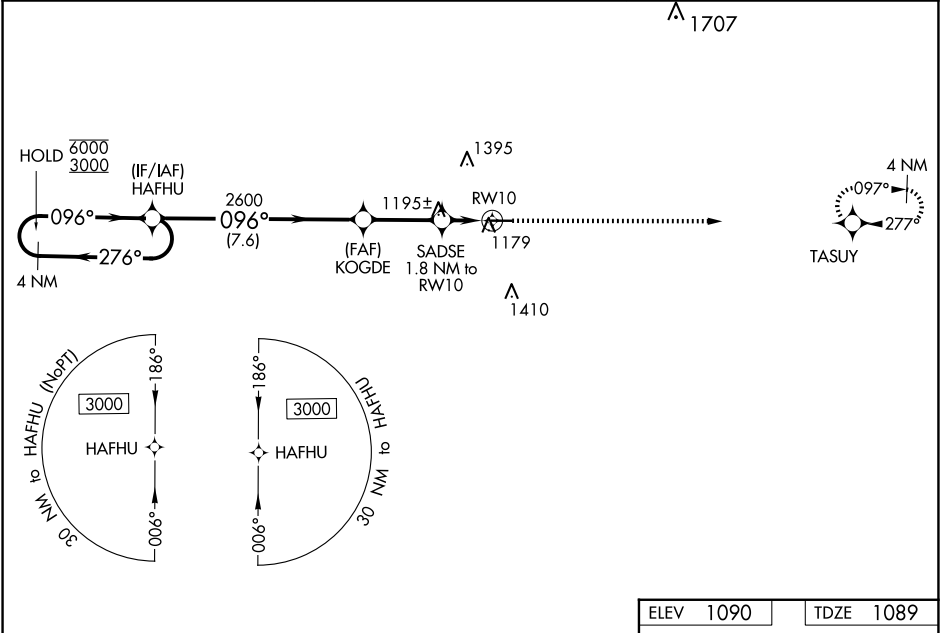
▼

⚠

Rwy 10 helicopter visibility reduction below $\frac{3}{4}$ SM NA. For uncompensated Baro-VNAV systems, LNAV/VNAV NA below -17°C or above 54°C. Baro-VNAV and VDP NA when using AID altimeter setting. When local altimeter setting not received, use Anderson altimeter setting; increase LPV DA to 1408 feet; increase LNAV/VNAV DA to 1424 feet; increase all MDAs 80 feet, LNAV visibility Cat C/D $\frac{3}{4}$ SM, and Circling visibility Cat C/D $\frac{1}{4}$ SM.

MISSED APPROACH:
Climb to 3000 direct TASUY and hold.

AWOS-3 132.375	INDIANAPOLIS APP CON 135.45 317.8	UNICOM 123.05 (CTAF) 0
--------------------------	---	----------------------------------



4 NM Holding Pattern

VGSI and RNAV glidepath not coincident (VGSI Angle 3.00/TCH 46).

3000 TASUY

CATEGORY	A	B	C	D
LPV DA	1339-1 250 (300-1)			
LNAV/VNAV DA	1355-1 266 (300-1)			
LNAV MDA	1460-1 371 (400-1)			
CIRCLING	1520-1 430 (500-1)	1540-1 450 (500-1)	1720-1 $\frac{3}{4}$ 630 (700-1 $\frac{3}{4}$)	1720-2 630 (700-2)

ELEV 1090 TDZE 1089

MIRL Rwy 10-28 0
REIL Rwy 10 and 28 0