

NDB UWL <b>385</b>	APP CRS <b>087°</b>	Rwy Idg TDZE Apt Elev	<b>4201</b> <b>1089</b> <b>1090</b>
-----------------------	------------------------	-----------------------------	---

NDB RWY 10

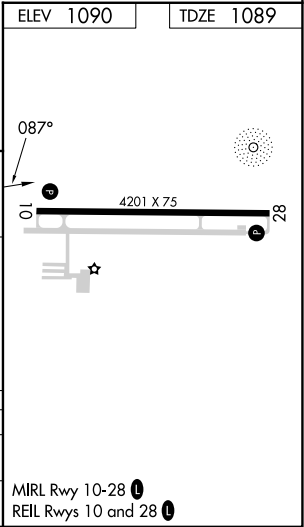
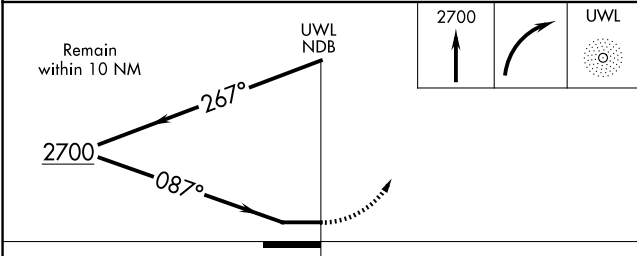
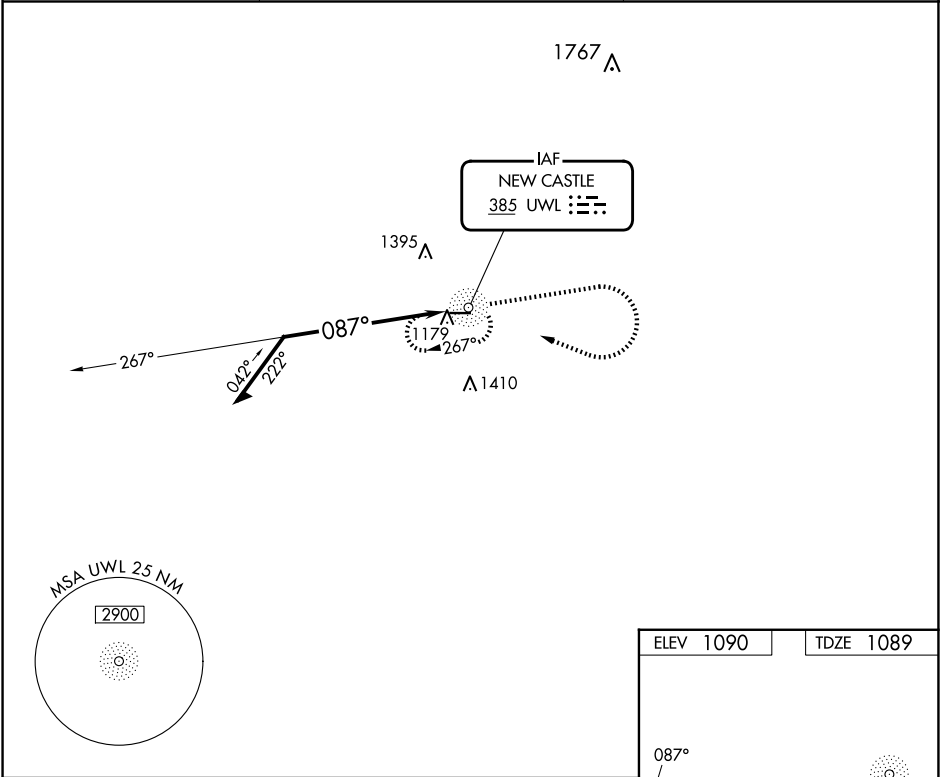
NEW CASTLE HENRY COUNTY MARLATT FLD (UWL)

RADAR required for procedure entry.

**⚠** Rwy 10 helicopter visibility reduction below ¾ SM NA. When local altimeter setting not received, use Anderson altimeter setting and increase all MDAs 80 feet, S-10 visibility Cat C/D ½ SM, and Circling visibility Cat C/D ¼ SM.

MISSED APPROACH: Climb to 2700 then right turn direct UWL NDB and hold.

AWOS-3 <b>132.375</b>	INDIANAPOLIS APP CON <b>135.45 317.8</b>	UNICOM <b>123.05 (CTAF) 0</b>
--------------------------	---	----------------------------------



CATEGORY	A	B	C	D
S-10	1680-1	591 (600-1)	1680-1¾	591 (600-1¾)
<b>C</b> CIRCLING	1680-1	590 (600-1)	1720-1¾ 630 (700-1¾)	1720-2 630 (700-2)

NDB RWY 10

EC-2, 10 JUL 2025 to 07 AUG 2025

EC-2, 10 JUL 2025 to 07 AUG 2025