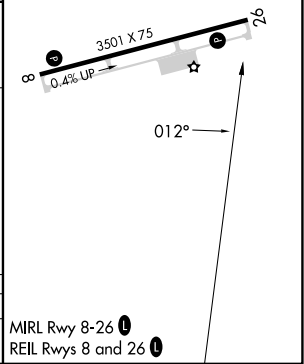
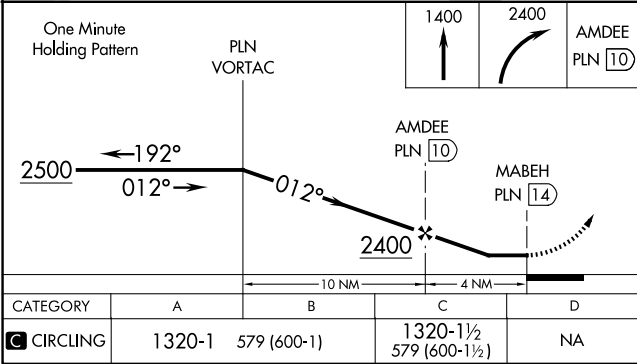
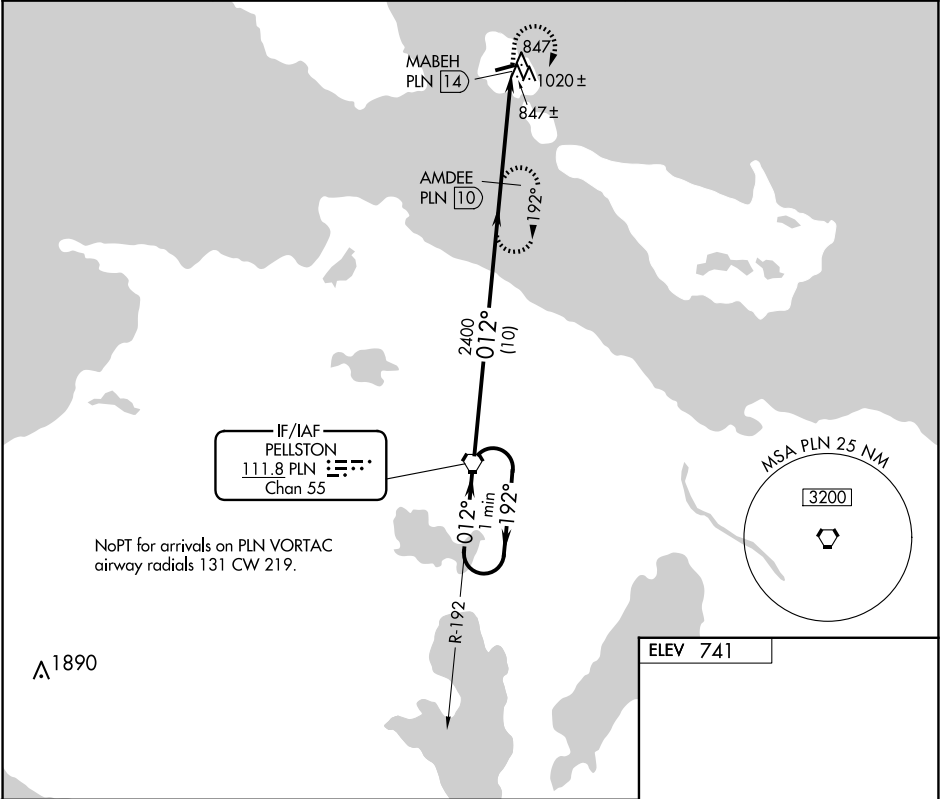


VORTAC	PLN	APP CRS	Rwy Idg	N/A
111.8		012°	TDZE	N/A
Chan 55			Apt Elev	741

VOR/DME-A
MACKINAC ISLAND (MCD)

<p>When local altimeter setting not received, use Pellston altimeter setting and increase all MDA 60 feet, increase Cat C visibility ¼ mile. Visibility reduction by helicopters NA. Night landing: Rwy 8 NA.</p>	<p>MISSED APPROACH: Climb to 1400 then climbing right turn to 2400 direct AMDEE 10 DME and hold.</p>
---	--

AWOS-3 118.275	MINNEAPOLIS CENTER 134.6 354.05	UNICOM 122.7 (CTAF)	122.8
-------------------	------------------------------------	------------------------	-------



EC-1, 10 JUL 2025 to 07 AUG 2025

EC-1, 10 JUL 2025 to 07 AUG 2025