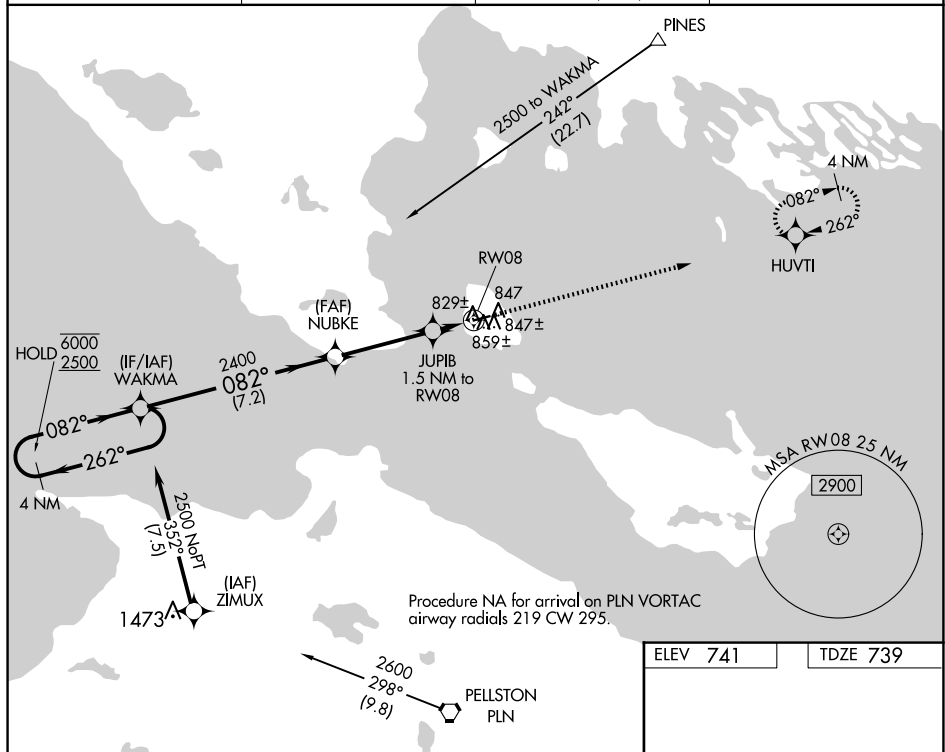


RNAV (GPS) RWY 8  
MACKINAC ISLAND (MCD)

**T** Rwy 8 helicopter visibility reduction below 1 SM NA. When local altimeter setting not received, **A** use Pellston altimeter setting and increase all MDA 60 feet, increase LP and LNAV Cat C visibility  $\frac{1}{8}$  SM and Circling Cat C visibility  $\frac{1}{4}$  SM. Straight-in and Circling Rwy 8 NA at night.

**MISSED APPROACH:**  
Climb to 2500 direct  
HUVTI and hold.

AWOS-3 <b>118.275</b>	MINNEAPOLIS CENTER <b>134.6 354.05</b>	UNICOM <b>122.7 (CTAF)</b>	<b>122.8</b>
--------------------------	---	-------------------------------	--------------



4 NM Holding Pattern

WAKMA

6000 ← 262°

2500 → 082°

082°

NUBKE

2400

JUPIB 1.5 NM to RW08

1240

RW08

7.2 NM

3.6 NM

1.5

Visual Segment - Obstacles.

2500

HUVTI

CATEGORY	A	B	C	D
LP MDA	1080-1 341 (400-1)			NA
LNAV MDA	1120-1	381 (400-1)	1120-1½ 381 (400-1½)	NA
<b>C</b> CIRCLING	1320-1	579 (600-1)	1320-1½ 579 (600-1½)	NA

\_\_\_\_\_

