

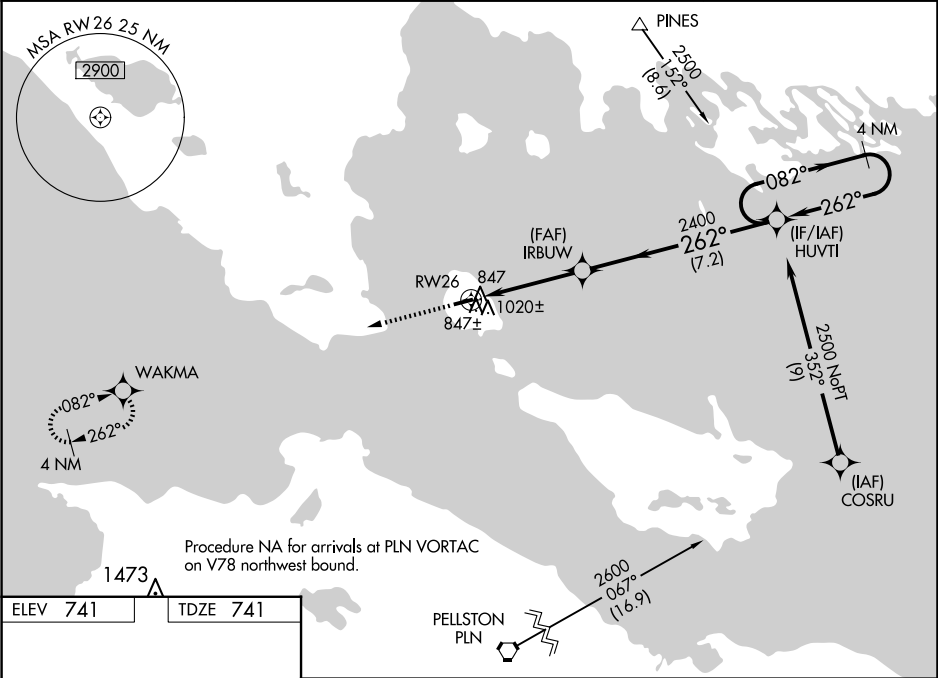
WAAS CH 99529 W26A	APP CRS 262°	Rwy Idg 3501 TDZE 741 Apt Elev 741
--	------------------------	---

RNAV (GPS) RWY 26
MACKINAC ISLAND (MCD)

⚠ Baro-VNAV NA when using Pellston altimeter setting. For uncompensated Baro-VNAV systems, LNAV/VNAV NA below -16°C (4°F) or above 54°C (130°F). When local altimeter setting not received, use Pellston altimeter setting and increase all DA 47 feet and all MDA 60 feet, increase LNAV Cat C visibility 1/8 mile and Circling Cat C visibility 1/4 mile. DME/DME RNP-0.3 NA. Helicopter visibility reduction below 1 SM NA. Night landing: Rwy 8 NA.

MISSED APPROACH:
Climb to 2500 direct WAKMA and hold.

AWOS-3 118.275	MINNEAPOLIS CENTER 134.6 354.05	UNICOM 122.7 (CTAF)	122.80
--------------------------	---	-------------------------------	---------------



ELEV **741** TDZE **741**

MIRL Rwy 8-26 **1**
REIL Rwy 8 and 26 **1**

2500 WAKMA

262°

3501 X 75

0.4% UP

2500

↑

WAKMA

✴

IRBUW

2400

262°

2400

262°

082°

2500

GP 3.70°

TCH 40°

4.1 NM

7.2 NM

HUVTI

RW26

4 NM Holding Pattern

CATEGORY	A	B	C	D
LPV DA	1058-1	317 (400-1)	NA	
LNAV/VNAV DA	1182-1⅓	441 (500-1⅓)	NA	
LNAV MDA	1280-1	539 (600-1)	1280-1½ 539 (600-1½)	NA
C CIRCLING	1320-1	579 (600-1)	1320-1½ 579 (600-1½)	NA

EC-1, 10 JUL 2025 to 07 AUG 2025

EC-1, 10 JUL 2025 to 07 AUG 2025