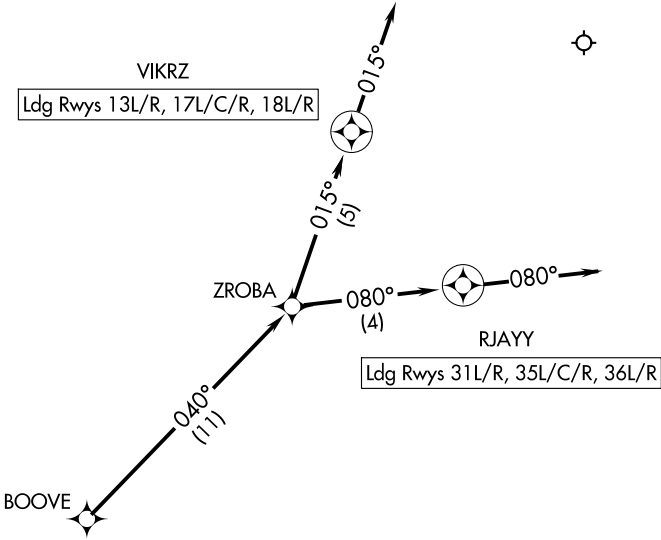


LONE STAR APP CON
119.875 284.65
D-ATIS ARR
123.775

- NOTE: RADAR required.
- NOTE: RNAV 1.
- NOTE: DME/DME/IRU or GPS required.
- NOTE: Prop and Turboprop only.



ARRIVAL ROUTE DESCRIPTION

- From BOOVE on track 040° to ZROBA.
- Landing RUNWAYS 13L/R, 17L/C/R, 18L/R: From ZROBA on track 015° to VIKRZ, then on track 015°. Expect RADAR vectors to final approach course.
- Landing RUNWAYS 35L/C/R, 36L/R, 31L/R: From ZROBA on track 080° to RJAYY, then on track 080°. Expect RADAR vectors to final approach course.