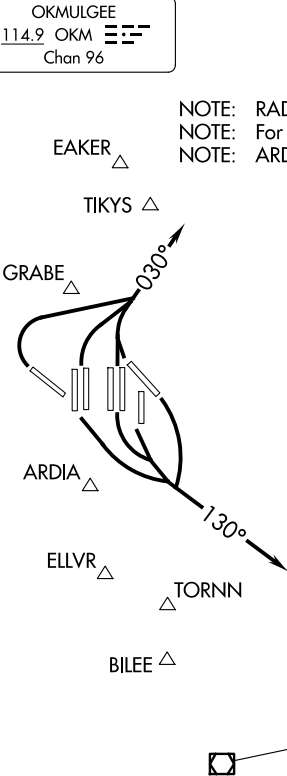


LONE STAR DEP CON  
124.3 282.275 (NORTH)  
125.2 343.65 (SOUTH)  
D-ATIS DEP  
135.925  
CLNC DEL  
128.25  
CPDLC  
GND CON  
121.65 121.8 (EAST)  
121.85 (WEST)  
DFW TOWER  
126.55 127.5 (EAST)  
124.15 134.9 (WEST)

TOP ALTITUDE:  
2000



TAKEOFF MINIMUMS

Rwy 35R: NA-ATC.

Rwys 13L/R, 17L/C/R, 18L/R, 31L/R, 35L/C, 36L/R: Standard.

NOTE: Chart not to scale.



DEPARTURE ROUTE DESCRIPTION

TAKEOFF RUNWAYS 13L/R, 17L/C/R, 18L/R: Climb on heading 130° for RADAR vectors to appropriate fix, then... .

TAKEOFF RUNWAYS 31L/R, 35L/C, 36L/R: Climb on heading 030° for RADAR vectors to appropriate fix, then... .

... maintain 2000 or as assigned by ATC, expect filed altitude 10 minutes after departure.