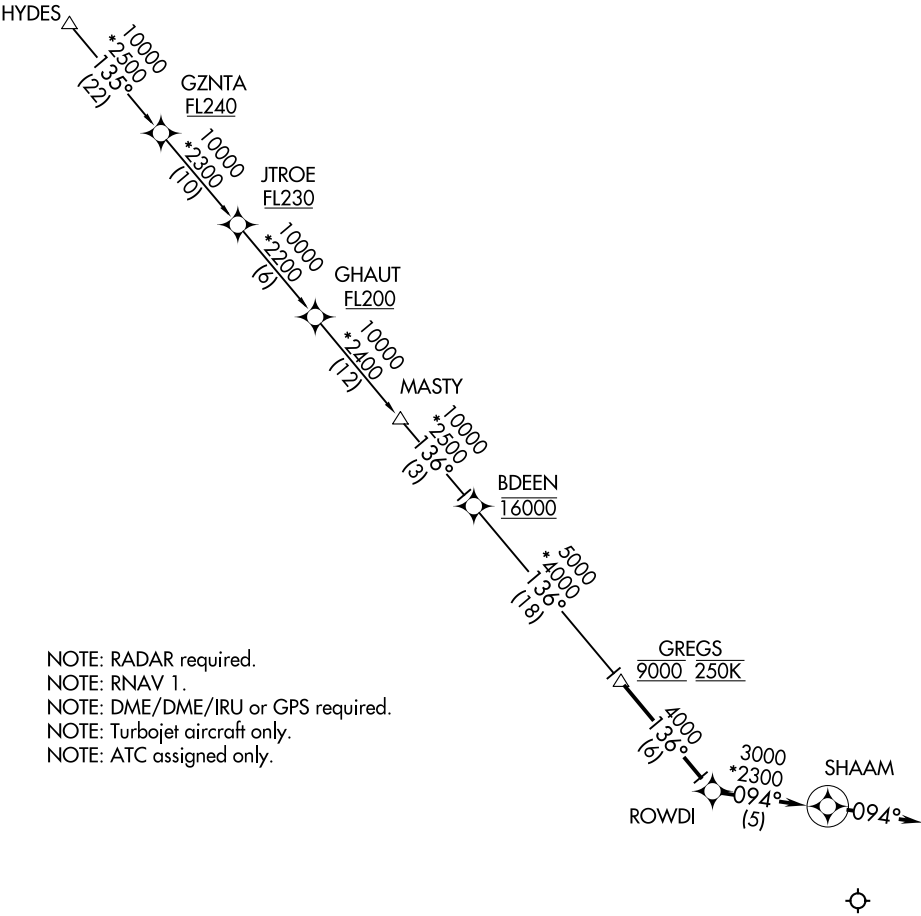


LONE STAR APP CON
119.875 284.65
D-ATIS
123.775



NOTE: Chart not to scale.

ARRIVAL ROUTE DESCRIPTION

GZNTA TRANSITION (GZNTA.SHAAM2)
HYDES TRANSITION (HYDES.SHAAM2)

From GREGS on track 136° to ROWDI, then on track 094° to SHAAM,
then on track 094°. Expect RADAR vectors to final approach course.