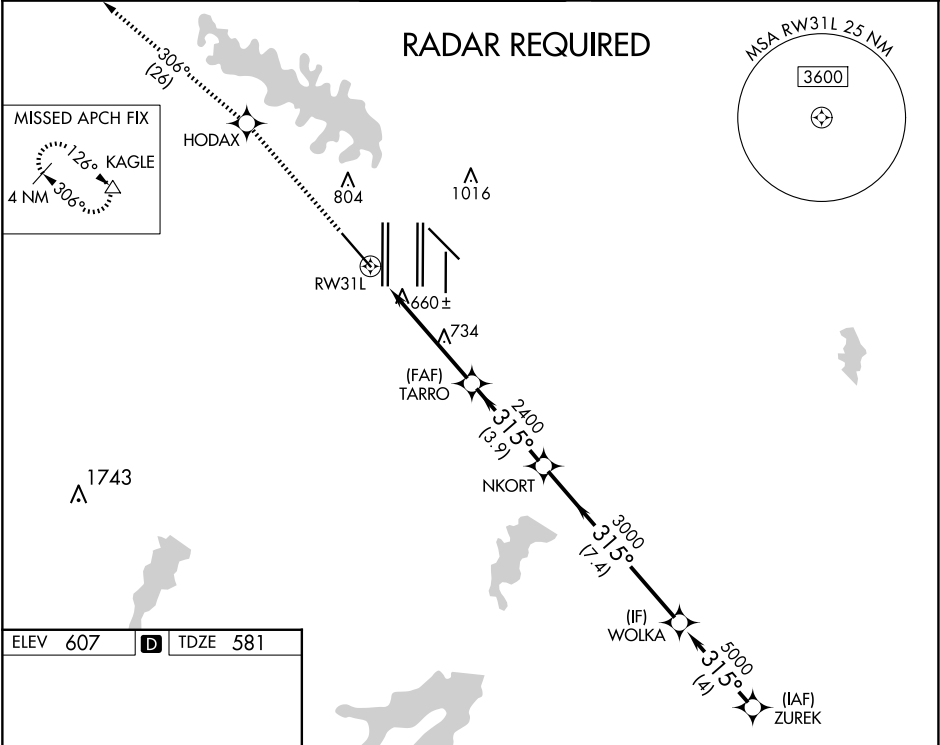


WAAS CH 99703 W31A	APP CRS 315°	Rwy Ldg 9300 TDZE 581 Apt Elev 607	RNAV (GPS) Y RWY 31L DALLAS-FORT WORTH INTL (DFW)
--	------------------------	---	---

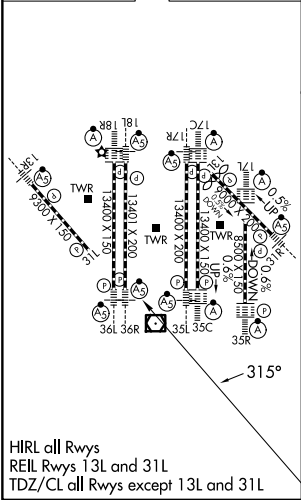
⚠ For uncompensated Baro-VNAV systems, LNAV/VNAV NA below -4°C (25°F) or above 54°C (130°F). Simultaneous approach authorized with Rwy 31R. DME/DME RNP-0.3 NA. LNAV procedure NA during simultaneous operations. Use of FD or AP providing RNAV track guidance required during simultaneous operations.

MISSED APPROACH: Climb to 3000 direct HODAX and on track 306° to KAGLE and hold.

D-ATIS ARR 123.775 DEP 135.925	LONE STAR APP CON 118.425 127.075 119.4	DFW TOWER 126.55 127.5 EAST 124.15 134.9 WEST	GND CON 121.65 121.8 EAST 121.85 WEST	CLNC DEL 128.25	CPDLC
--	---	---	---	---------------------------	-------



ELEV 607	D	TDZE 581
----------	----------	----------



HIRL all Rwy's
REIL Rwy's 13L and 31L
TDZ/CL all Rwy's except 13L and 31L

3000	HODAX	tr 306°	KAGLE	VGSi and RNAV glidepath not coincident (VGSi Angle 3.13/TCH 72).			
*LNAV only.				WOLKA ZUREK			
RW31L				315° 5000			
1.2				GP 3.00° TCH 54			
CATEGORY				A B C D			
LPV DA				831/40 250 (300-¾)			
LNAV/VNAV DA				907/50 326 (400-1)			
LNAV MDA				1060/55 479 (500-1) 1060-1½ 479 (500-1½)			