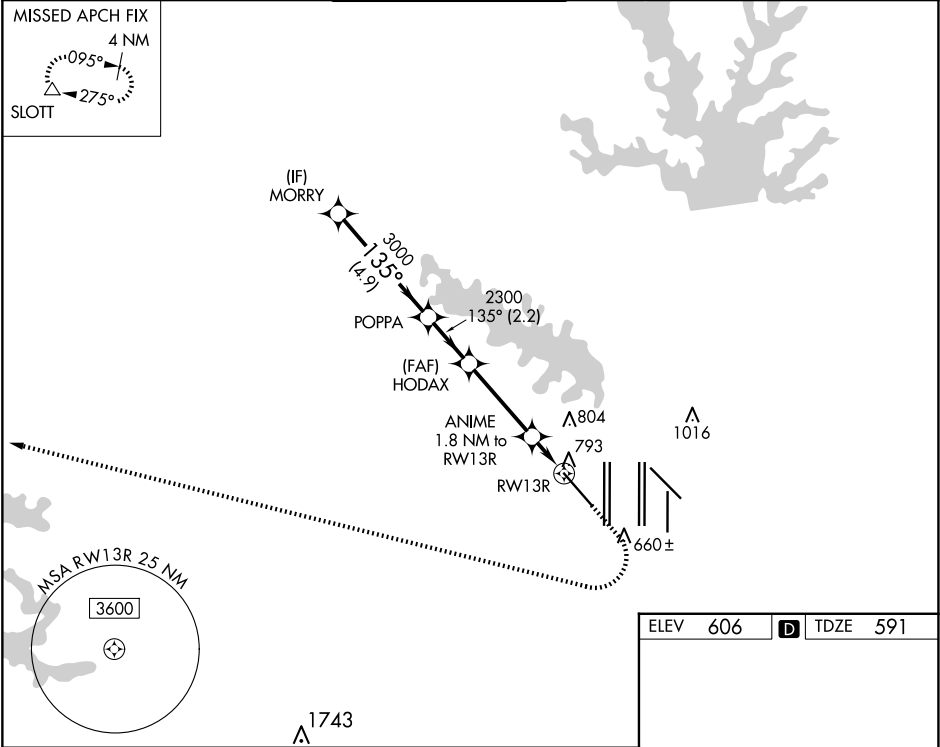


WAAS CH <b>72742</b> <b>W13A</b>	APP CRS <b>135°</b>	Rwy Ldg <b>9300</b> TDZE <b>591</b> Apt Elev <b>606</b>
--	------------------------	---

RNAV (GPS) Y RWY 13R  
DALLAS-FORT WORTH INTL (DFW)

RNP APCH - GPS. ▼ For uncompensated Baro-VNAV systems, LNAV/VNAV NA below -8° C or above 54° C. For inop ALS, increase LNAV/VNAV all Cats visibility to RVR 6000 and LNAV Cat C/D visibility to 1½ SM.		MALSR ⚠	MISSED APPROACH: Climb to 1100 then climbing right turn to 3000 direct SLOTT and hold.	
D-ATIS ARR <b>123.775</b> DEP <b>135.925</b>	LONE STAR APP CON <b>133.15 118.1</b>	DFW TOWER <b>126.55 127.5 EAST</b> <b>124.15 134.9 WEST</b>	GND CON <b>121.65 121.8 EAST</b> <b>121.85 WEST</b>	CLNC DEL <b>128.25</b>
		CPDLC		



VGSI and RNAV glidepath not coincident (VGSI Angle 3.00/TCH 71).

MORRY	POPPA	HODAX	ANIME 1.8 NM to RWY 13R	RWY 13R
3000	3000	2300	1200	
GP 3.00° TCH 55				
4.9 NM	2.2 NM	3.4 NM	1.8 NM	
CATEGORY	A	B	C	D
LPV DA		791/18	200 (200-½)	
LNAV/VNAV DA		991/35	400 (400-¾)	
LNAV MDA	1080/24	489 (500-½)	1080/50	489 (500-1)

