

APP CRS
311°

Rwy Ldg
TDZE
Apt Elev
8373
523
607

RNAV (RNP) Z RWY 31R

DALLAS-FORT WORTH INTL (DFW)

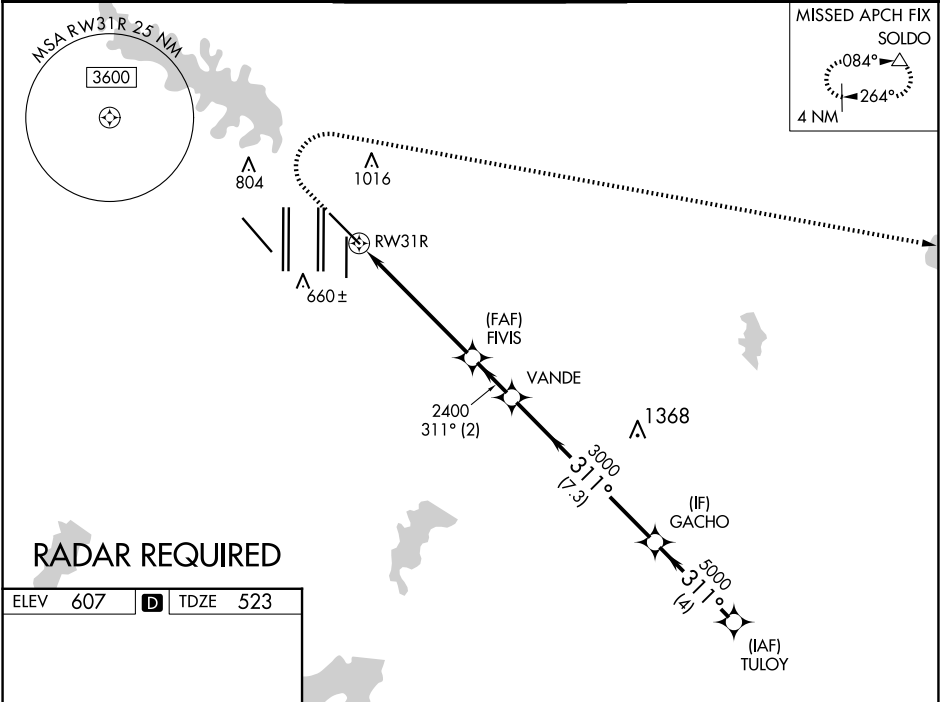
▼

For uncompensated Baro-VNAV systems, procedure NA below -4°C (25°F) or above 54°C (130°F). For inop MALSR, increase RNP 0.14 all Cats visibility to RVR 5100, RNP 0.23 all Cats visibility to 1½ mile, RNP 0.30 all Cats visibility to 1½ mile. Simultaneous approach authorized with Rwy 31L. GPS Required. Use of FD or AP providing RNAV track guidance required during simultaneous operations.

MALSR

MISSED APPROACH: Climb to 1100 then climbing right turn to 3000 direct SOLDO and hold.

D-ATIS	LONE STAR APP CON	DFW TOWER	GND CON	CLNC DEL	CPDLC
ARR 123.775	135.5 125.2	126.55 127.5 EAST 124.15 134.9 WEST	121.65 121.8 EAST 121.85 WEST	128.25	
DEP 135.925					



ELEV **607** **D** TDZE **523**

HIRL all Rwws
REIL Rwws 13L and 31L
TDZ/CL all Rwws except 13L and 31L

1100 3000 SOLDO

VGSI and RNAV glidepath not coincident (VGSI Angle 3.00/TCH 69).

311°

3000

2400

5000

311°

5000

GP 3.00° TCH 53

CATEGORY	A	B	C	D
RNP 0.14 DA		838/27	315 (300-½%)	
RNP 0.23 DA		928/44	405 (400-¾%)	
RNP 0.30 DA		987/55	464 (400-1)	

AUTHORIZATION REQUIRED

DALLAS-FORT WORTH, TEXAS

Amdt 2A 18SEP14

32°54'N-97°02'W

DALLAS-FORT WORTH INTL (DFW)

RNAV (RNP) Z RWY 31R